



Instance Setting Guide

October 30, 2024 | Version 24.0.315.10

For the most recent version of this document, visit our [documentation website](#).

Table of Contents

1 Instance setting table overview	4
1.1 Accessing the instance setting table	4
1.2 Adding and deleting instance settings with stored procedures	6
1.2.1 CreateInstanceSetting	6
1.2.2 DeleteInstanceSetting	7
2 Instance settings	8
2.1 Instance settings change log	8
2.2 Instance settings descriptions	8
2.3 A	8
2.4 B	16
2.5 C	18
2.6 D	27
2.7 E	38
2.8 F	46
2.9 G	48
2.10 H	49
2.11 I	50
2.12 J	54
2.13 K	55
2.14 L	55
2.15 M	58
2.16 N	70
2.17 O	70
2.18 P	71
2.19 Q	77
2.20 R	77
2.21 S	84
2.22 T	92
2.23 U	94
2.24 V	97

2.25 W	98
2.26 X	102

1 Instance setting table overview

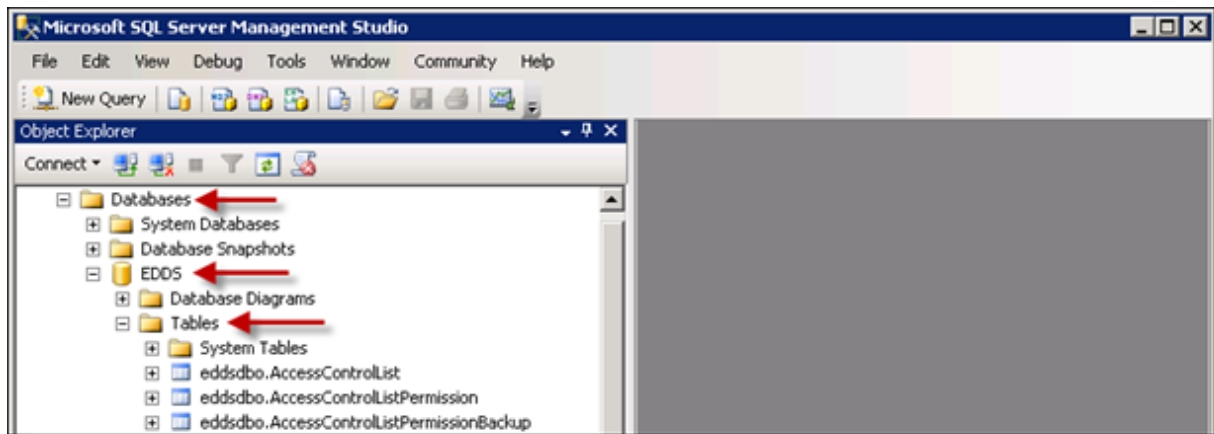
This guide provides a description of each entry in the Instance setting table, along with each entry's default value.

For more information about backwards compatibility, see Upgrade considerations for Relativity in the Upgrade guide.

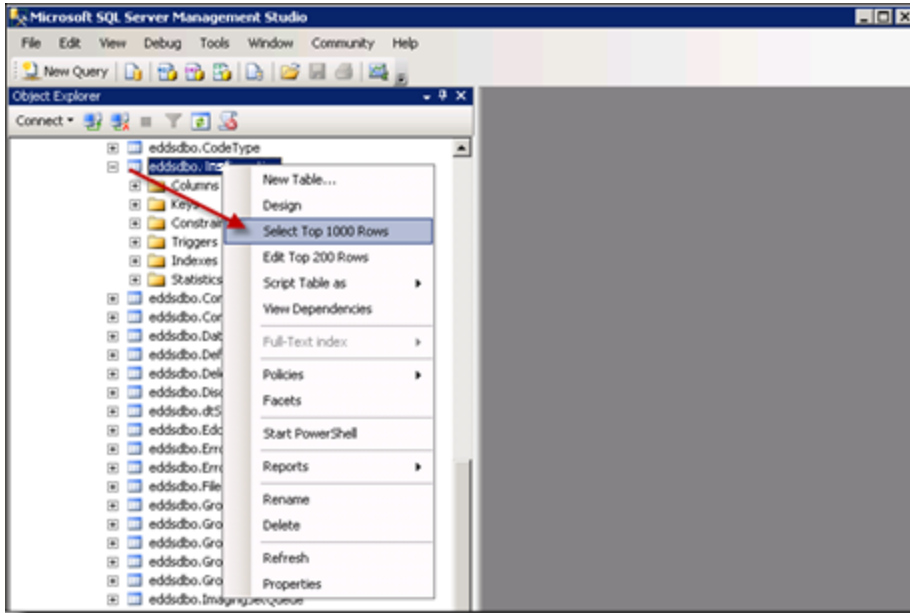
1.1 Accessing the instance setting table

To access the instance setting table, perform the following steps:

1. Access the primary server environment containing all databases, including EDDS.InstanceSetting.
2. Connect to the Microsoft SQL Server Management Studio.
3. In the Object Explorer tree, expand **Databases > EDDS > Tables**.



4. Right-click the `eddsdbo.InstanceSetting` table, and select the option **Select Top 1000 Rows**.

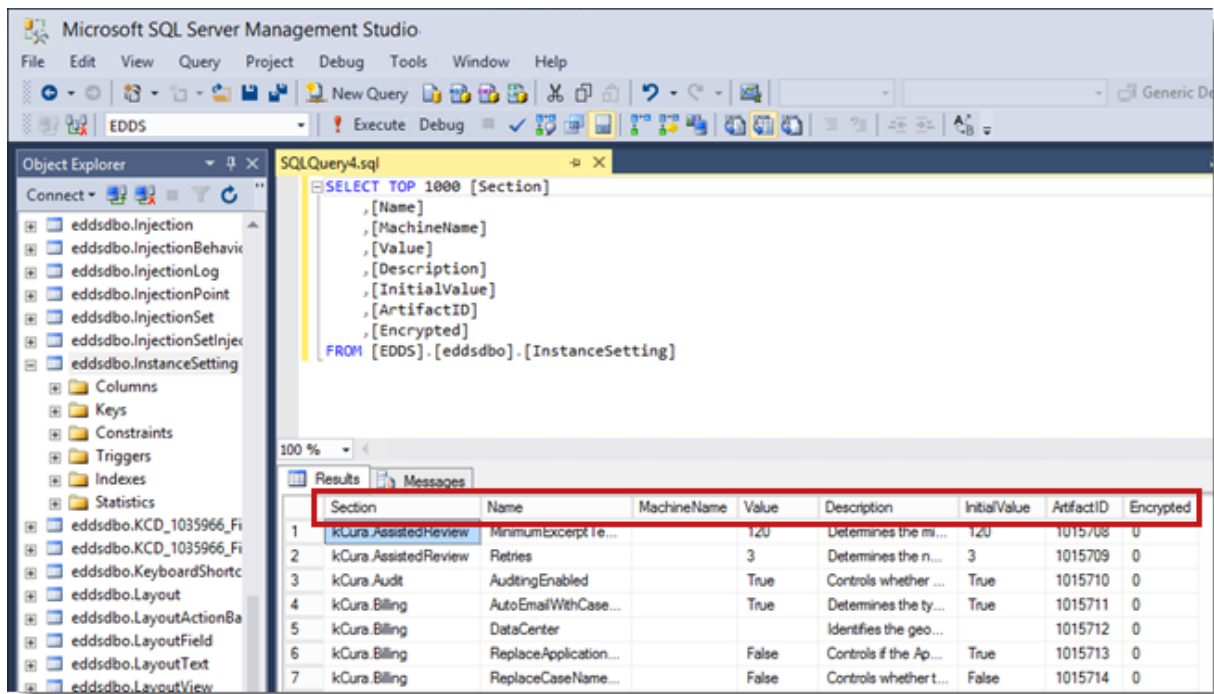


The `eddsdbo.InstanceSetting` table opens. It displays the Section, Name, MachineName, Value, Description, InitialValue, ArtifactID, and Encrypted columns for all the entries in the table.

Note: If the MachineName field is empty, this is the default value for all machines in the Relativity instance. Otherwise, this value for the setting only applies to the specified machine, overwriting the default value.

5. Locate the instance setting you want to change and update the Value column.
6. We recommend creating, updating, and deleting instance settings using the Instance Settings tab. See Instance Settings in the Admin Guide. Using the Instance Settings tab ensures that an audit of changes to an instance setting exists.

Note: You can create, update, and delete instance settings through SQL, however, note that doing so could have a significant effect on the performance and functionality of your Relativity environment.



Refer to [Instance settings on page 8](#) for a complete list of Relativity instance setting values.

1.2 Adding and deleting instance settings with stored procedures

If the Relativity UI is not available, you can create and delete instance settings using the stored procedures in the Relativity EDDS database. For example, the stored procedures can be used during the initial installation and configuration or when adding new servers.

1.2.1 CreateInstanceSetting

The CreateInstanceSetting stored procedure creates an instance setting based on specified parameters.

Note: You can't update encrypted instance settings by running the stored procedure. However, you can use the stored procedure to update settings that aren't encrypted.

Parameters:

- @section NVARCHAR(200)
- @name NVARCHAR(200)
- @machineName VARCHAR(200) = ''
- @value NVARCHAR(200) = ''
- @valueType NVARCHAR(200) = 'Text'
- @description NVARCHAR(MAX) = NULL
- @initialValue NVARCHAR(MAX) = NULL
- @createAsSystemArtifact BIT = 0

Only the @section and @name parameters are required. All other parameters have set default values if you choose not to use them.

Note: Instance settings with non-text values should not ever have empty values. The creation of such instance settings will fail.

This example creates the Relativity.Authentication.AccessTokenExtraLifetime for the RelWeb01 server. It has a value of 120 (though we decided to label the installation default value as 240, as a guide to environmental administrators that 240 may be a more recommended value) as is explicitly a nonnegative 32-bit integer.

```
-- THIS EXAMPLE IS OK.  It will fail if the Instance Setting already exists.

EXEC [eddsdbo].CreateInstanceSetting
    @section = 'Relativity.Authentication', @name = 'AccessTokenEx-
traLifetime', @machineName = 'RelWeb01',
    @value = '120',
    @description = 'The number of minutes that the authentication cookie is
valid.',
    @valueType = 'Nonnegative Integer 32-bit',
    @initialValue = '240'
```

1.2.2 DeleteInstanceSetting

The DeleteInstanceSetting stored procedure deletes an instance setting based on specified parameters.

Parameters:

- @section NVARCHAR(200)
- @name NVARCHAR(200)
- @machineName VARCHAR(200) = "

This example demonstrates how to delete the Relativity.Authentication.AccessTokenExtraLifetime for instance setting we created in the first example:

```
EXEC [eddsdbo].DeleteInstanceSetting @section = 'Relativity.Authentication',
@name = 'AccessTokenExtraLifetime', @machineName = 'RelWeb01'
```

2 Instance settings

This page provides an alphabetical list of all the instance settings in Relativity.

Note: A number of the instance setting entries listed below should never be modified in your environment, despite the fact that they appear in the EDDS.InstanceSetting table in the database. For these entries, we've included a *Do not modify* statement at the beginning of the description.

2.1 Instance settings change log

The following table lists all added, removed, and modified instance settings for Server 2023.

Type of change	Name	Section	Notes
Added	AuthenticatorRegistrationName	Relativity.Authentication	
Added	IAPICommunicationMode	DataTransfer.Legacy	
Removed	AdvancedOptionsEnabled	kCura.ARM	
Removed	AdditionalSortBy	kCura.Audit	
Removed	CustodianPortalAuthLoadRefreshTime	kCura.Method	
Removed	CacheTimeout	Relativity.CaseDynamics	
Removed	DisableAutoCSVIdentification	Relativity.Conversion	
Removed	HungOilinkProcessCleanerRunIntervalInMinutes	Relativity.Conversion	
Removed	OilinkMaximumAllowedLifeSpanInMinutes	Relativity.Conversion	
Removed	AdvancedImagingTimeout	Relativity.Core	
Removed	DisableOffHoursCollectFolderPath	Relativity.DocumentViewer	
Removed	TransmissionUrl	Relativity.Telemetry	

2.2 Instance settings descriptions

2.3 A

- AboutBoxInstanceNameVisible

Section	kCura.EDDS.Web
Value	True
Description	Specifies if the Relativity instance name can be seen in the About box.

- AboutBoxPortalLink

Section	kCura.EDDS.Web
Value	https://na3.salesforce.com/secur/login_portal.jsp?orgId=00D5000000072uY&portalId=060500000004fqC
Description	Identifies the location to which the Relativity Icon Box redirects.

- AboutBoxSupportLink

Section	Relativity.Authentication
Value	https://www.relativity.com/support/
Description	Identifies the location to which the Support link redirects.

■ AccessTokenExtraLifetime

Section	Relativity.Authentication
Value	240
Description	Determines the number of additional minutes the authentication token remains valid after the authentication cookie has expired. You can use this token to access Relativity APIs because it has a longer lifetime than a session cookie. This may execute long running processes requiring tokens. This instance setting supports a maximum value of 600 minutes, or 10 hours, and a minimum value of 240 minutes, or 4 hours. You must reset the IIS for these changes to take effect.
Recommended security value	<ul style="list-style-type: none"> ○ Use the default setting. ○ It is more secure to limit the life of this token.

■ Account

Section	kCura.LicenseManager
Value	UNSETACCOUNT
Description	Determines the text that appears in the Account column in the Case Statistics Rollup report.

■ AdditionalWorkFactorDefault

Section	Relativity.Authentication
Value	0
Description	Sets the default value for the AdditionalWorkFactor setting in the Authentication Provider Settings section of the Authentication Provider tab.
Recommended security value	<ul style="list-style-type: none"> ○ Use the default setting unless your organization decides more hashing is necessary. ○ More hashing means better encryption, but increasing this value should be tested prior to making the change in Production, as it could significantly increase login time.

■ AdminsCanSetPasswords

Section	Relativity.Authentication
Value	(Undefined)
Description	Sets the system admin's ability to create passwords for users. If True, they can create the password. If False, they cannot. You must manually create this instance setting because it's not installed by default.
Recommended security value	If this setting exists, either delete it OR set its value to False - this means that only the user knows his or her password.

■ AdvancedSearchDefault

Section	kCura.EDDS.Web
---------	----------------

Value	False
Description	Controls the default setting for Advanced Search Default when creating new users. If set to True the default setting is public. If set to False, the default setting is private.

- AgentManagerCheckInDelay

Section	Relativity.Core
Value	5000
Description	Determines the interval at which the Agent Manager updates agent servers.

- AgentOffHourEndTime

Section	kCura.EDDS.Agents
Value	5:00:00
Description	<p>Specifies a valid time range when off hour agents should run. This instance setting is used in conjunction with the AgentOffHourStartTime instance setting.</p> <p>Currently, this only applies to the File Deletion manager, Case Statistics Manager, Case Manager, and Cache Manager. The File Deletion manager immediately stops deleting documents once the time of day passes the AgentOffHourEndTime. The Case Statistics manager and Case Manager continue to process until completion.</p> <p>To enter a setting, use 24-hour time notation with the format of hh:mm:ss. If the start time is before midnight, you must also set the end time before midnight. For example, a start time of 23:00:00 might have an end time of 23:59:00. If the start time is midnight or later, you can set the end time to any value after the start time. For example, a start time of midnight that is between 00:00:00 and 03:00:00 can have any end time.</p>

- AgentOffHourStartTime

Section	kCura.EDDS.Agents
Value	00:00:00
Description	<p>Specifies a valid time range when off hour agents should run. This instance setting is used in conjunction with the AgentOffHourEndTime instance setting.</p> <p>Currently, this only applies to the File Deletion manager, Case Statistics Manager, Case Manager, and Cache Manager. The File Deletion manager immediately stops deleting documents once the time of day passes the AgentOffHourEndTime. The Case Statistics manager and Case Manager continue to process until completion.</p> <p>To enter a setting, use 24-hour time notation with the format of hh:mm:ss. If the start time is before midnight, you must also set the end time before midnight. For example, a start time of 23:00:00 might have an end time of 23:59:00. If the start time is midnight or later, you can set the end time to any value after the start time.</p>

- AgentThreadCount

Section	kCura.ARM
Value	1
Description	Specifies the number of threads each ARM agent can run.

- AllowAddOrEditScripts

Section	kCura.EDDS.Web
---------	----------------

Value	False
Description	Determines whether create/edit is enabled for Relativity Scripts.
Recommended security value	False - setting this to false limits the number of users who can create and edit Relativity scripts. Running a badly written script could potentially affect the entire site.

- AllowADSToShrinkFieldLength

Section	Relativity.Core
Value	False
Description	Indicates whether a field can have its length shortened during application import. Setting this value to True lets field lengths shrink. Setting this value to False prevents field lengths from shrinking.

- AllowChangesToOverwriteProtection

Section	kCura.EDDS.Web
Value	False
Description	Controls whether the Overwrite Protection drop-down menu is editable when editing or creating a layout. If set to True, users can set this property to Disabled and save a document even if another process has modified the document since loading. If set to False, users cannot set this property to Disabled.

- AllowHtmlVisible

Section	Relativity.Core
Value	False
Description	Controls the accessibility of the Allow HTML property on Field objects. If set to False, the Allow HTML property is hidden from the New Field page and its value defaults to No. The Edit Field page displays the property only if the field being edited already has the property's value set to Yes. If set to True, there is unrestricted access to the Allow HTML field property.
Recommended security value	False - this prevents administrators from allowing HTML as inputs into fields. By doing this, attackers cannot input malicious HTML or scripts.

- AllowMaintenanceModeAccessToGroups

Section	Relativity.Authentication
Value	Text
Description	A semicolon delimited list of Artifact IDs of groups allowed access to Relativity while maintenance mode is active. This instance setting is not encrypted. For more information, see InMaintenanceMode on page 52 setting.

- AllowNativeRedactions

Section	kCura.EDDS.Web
Value	True
Description	Determines whether users can perform redactions within the Native Viewer. If set to True, users can perform redactions within the Native Viewer. If set to False, users cannot perform redactions within the Native Viewer.

- AlreadyMarkedDirtyMinLastAccessedHours

Section	Relativity.Conversion.Cache
Value	4
Description	The minimum time that must elapse, in hours, before a cached document already marked dirty is added to the job.

- AnalyticsAutoldLanguages

Section	Relativity.Core
Value	False
Description	Toggles automatic language identification mode for analytics. If set to True, all documents are processed through language identification code, and then processed according to the locale rules for the identified language. By default this is not enabled.

- AnalyticsCategorizationBatchSize

Section	Relativity.Core
Value	100000
Description	Determines the number of objects per batch of CategoryResult objects created within Relativity once the Analytics engine has categorized them.

- AnalyticsCategorizationCreationBatchSize

Section	Relativity.Core
Value	1000
Description	Determines the number of objects per batch of CategoryResult objects created within Relativity once the Analytics engine has categorized them.

- AnalyticsCategorizationDeadlockWait

Section	kCura.Data.RowDataGateway
Value	30000
Description	The amount of time, in milliseconds, a query waits to retry when a deadlock happens during the run of a categorization set.

- AnalyticsCategorizationDeletionBatchSize

Section	Relativity.Core
Value	1000
Description	Determines the number of objects per batch of CategoryResult objects deleted within Relativity when the user chooses to run a full categorization against a set that has been previously categorized.

- AnalyticsIndexChoiceUpdateBatchSize

Section	Relativity.Core
Value	100 KB
Description	This instance setting is used after enabling queries on an analytics index. It updates the choice field, Analytics Index, on the Document object.

- AnalyticsIndexExcludeLargeDocuments

Section	Relativity.Data
---------	-----------------

Value	True
Description	Enables the removal of documents from an Analytics Index before population begins.

- **AnalyticsRestTimeout**

Section	Relativity.Core
Value	200
Description	This setting controls the timeout of HTTP requests, in seconds, to CAAT using REST. This cannot be set to 0. Changes to this will require a restart of the service the request is coming from. For example, agents, web, and others.

- **AncestorCountWarningLevel**

Section	kCura.EDDS.Web
Value	50000
Description	Determines the number of ancestors that must exist before a warning appears in the Security page. The warning appears when a user changes the item's security more than this number of ancestors. The purpose of the warning is to warn users the database locks for a substantial period of time.

- **API Timeout**

Section	kCura.Relativity
Value	30
Description	Sets the Relativity API token expiration time in minutes.

- **ApplicationInstallationManagerCacheTimeout**

Section	Relativity.Core
Value	10
Description	The amount of time, in minutes, that the Application Installation Manager agent caches an application's schema, custom pages, assemblies, and resource files in memory. A value of 0 disables the cache.

- **ApplicationRestrictedFileTypes**

Section	Relativity.Core
Value	.exe;.com;.pif;.bat;.scr
Description	A semicolon-delimited list of file extensions, including periods, indicating file types users are prohibited from uploading as custom pages or resource files. Examples include .exe, .com, and .bat. Also, see RestrictedFileTypes .
Recommended security value	<ul style="list-style-type: none"> ○ Use the default values plus any other file extensions your organization deems necessary. ○ Add any file extensions to the list that your organization deems unsafe.

- **AuditApplicationUninstallEnabled**

Section	Relativity.Core
Value	True
Description	Controls whether Relativity writes an entry to the audit log for each component edited or

deleted when you uninstall an application. Setting this value to True writes the entries. Setting this value to False does not write the entries.

■ AuditCountQueries

Section	Relativity.Core
Value	False
Description	Controls if the SQL count query is written to the History record. For each list that is generated, the system initially runs a count query to get the total number of records that fulfill the criteria. Setting this value to True writes the SQL query to the History record. Setting this value to False does not write the SQL query to the History record.

■ AuditDataGridEndPoint

Section	kCura.Audit
Value	blank
Description	Used for Data Grid connection. This value is required to activate Data Grid operation for this Relativity instance, http://client:9200 .
	Note: This instance setting must be manually added to your environment.

■ AuditDeleteBatchSize

Section	kCura.Audit
Value	200000
Description	Determines the size of the batch that the agent uses when deleting audit records previously migrated to Data Grid.

■ AuditingEnabled

Section	kCura.Audit
Value	True
Description	Controls whether auditing is enabled throughout Relativity. Setting this value to True enables auditing. Setting this value to False disables auditing.
Recommended security value	True - this keeps detailed logs of all actions that take place in Relativity can protect your organization if there is ever a need to troubleshoot an issue or investigate the actions of a particular user.

■ AuditFullQueries

Section	Relativity.Core
Value	False
Description	Controls whether the SQL query that gets the data to fill the rows on the current page is written to the History record. For each list page that is generated, the system initially runs a query to get the data to fill the rows on the current page. Setting this value to True writes the SQL query to the History record. Setting this value to False does not write the query to the History record.

■ AuditIdQueries

Section	Relativity.Core
---------	-----------------

Value	True
Description	Controls whether the SQL queries used to get a batch of Artifact IDs that fulfill the criteria and are needed to populate the current page in the list are written to the History record. Setting this value to True writes the SQL queries to the History record. Setting this value to False doesn't write the SQL queries to the History record.

- AuditMigrateBatchSize

Section	kCura.Audit
Value	50000
Description	Determines the size of the batch that the agent uses when reading from SQL and writing to Data Grid.

- AuditPivotColumnRetrievalQueries

Section	Relativity.Core
Value	True
Description	Controls whether the SQL query that gets the unique columns needed to display the data is written to the History record. For each pivot list and chart, a query runs to get the unique columns needed to display the data. Setting this value to True writes the SQL query to the History record. Setting this value to False does not write the SQL query to the History record.

- AuditPivotFullQueries

Section	Relativity.Core
Value	True
Description	Controls whether the SQL query used to get the data for the rows and columns of each pivot list and chart is written to the History record. Setting this value to True writes the SQL query to the History record. Setting this value to False doesn't write the SQL query to the History record.

- AuditPivotMaxBucketCount

Section	kCura.Audit
Value	1000
Description	Specifies the maximum number of aggregated groups for audit pivots.

- AuditQueueMaxDocumentErrors

Section	kCura.Audit
Value	100
Description	Determines the maximum number of errors allowed for a single batch in the Audit Migration Agent before the job is terminated. If this limit is reached, the respective agent will throw an exception saying that the failure limit has been reached.

- AuthenticationEmailFrom

Section	kCura.Notification
Value	authentication@relativity.com
Description	Defines the email address that appears in the From field of email messages that contain authentication information for users.

- AuthenticationTokenLifetimeInMinutes

Section	Relativity.Core
Value	5
Description	The amount of time, in minutes, an authentication token is valid. Relativity receives a token every time an application other than Relativity is authenticated using Relativity's internal mechanism.

- AuthenticatorRegistrationName

Section	Relativity.Authentication
Value	N/A
Description	The application name used for two-factor authentication Authenticator app. Colons will be removed.

- AutoCreateRate

Section	kCura.EDDS.Web
Value	60
Description	Determines how often, in minutes, the system attempts to create batches.

- AutoEmailWithCaseStatisticsManager

Section	kCura.Billing
Value	True
Description	Determines the type of file the Case Statistics Manager agent generates to send client billing information to Relativity. If set to True, the Case Statistics Manager agent generates a text file with client billing information which is sent to Relativity. Each time the agent runs, the new text file is sent to Relativity through the SMTP server. If set to False, the Case Statistics Manager generates a zip file with client billing information, which is stored in the location specified in the EDDSSFileShare value. Each time the agent runs, a new date-stamped file is created and stored in this folder. Zip files stored in this location can be manually sent to Relativity.

- AutomatedDropColumn

Section	Relativity.DataGrid
Value	False
Description	This instance setting prevents the dropping of the column from the full text index and the document table. If enabled, the user is responsible for dropping this column from the database.

2.4 B

- BackupDirectory

Section	kCura.EDDS.SqlServer
Value	During Relativity installation
Description	Identifies the path to the backup directory that SQL Server uses. This value should be relative to the server where SQL Server is installed.

- BaseApplicationPath

Section	kCura.EDDS.Procuro
Value	During Relativity installation
Description	Identifies the root path where Procuro looks for required Relativity applications.

- BaseRelativityScriptPath

Section	kCura.EDDS.Procuro
Value	During Relativity installation
Description	Identifies the root path where Procuro looks for its SQL scripts.

- BasicImagingTimeout

Section	Relativity.Core
Value	300
Description	The amount of time, in seconds, that the basic imaging process waits for a single document to be imaged before killing the export process and moving to the next document.

- BcpShareFolderName

Section	kCura.Chicago
Value	BCPPath
Description	Defines the name of the share used for Bulk Inserts and the Case Statistics manager.

- BCryptWorkFactor

Section	Relativity.Core
Value	11
Description	Controls the strength of the encryption used for password hashing using a bCrypt work factor constant. Any value lower than 10 defaults to 10. Incrementing by 1 doubles the time it takes to hash the password.

- BinderDocumentDeleteBatchSize

Section	Relativity.Core
Value	1000
Description	The number of binder documents to delete at a time when starting a new binder build.

- BrandingManagerBatchAmount

Section	kCura.EDDS.Agents
Value	100
Description	Determines the number of files the Branding Manager brands in a single batch.

- BrandingManagerTimeoutCount

Section	Relativity.Production
Value	10
Description	The number of times branding managers can be timed out for a single production before all incomplete branding jobs are marked as errored. Set to 0 to disable.

- BrandingRecordCreationBatchSize

Section	kCura.EDDS.Agents
---------	-------------------

Value	10000
Description	Determines the maximum number of records inserted into the Branding Queue table in a single batch. Both the Production Manager and users attempting to Resolve Errors in the web use this functionality.

- BufferAcquisitionTimeoutInMilliseconds

Section	kCura.EDDS.Web.Distributed
Value	5000
Description	The amount of time, in milliseconds, the Distributed site waits to acquire a free buffer to use for downloading before throwing an error.

- BufferCount

Section	kCura.EDDS.Web.Distributed
Value	1000
Description	Determines the number of buffers that the Distributed site allocates to servicing download requests.

- BufferSize

Section	kCura.EDDS.Web.Distributed
Value	81920
Description	The maximum size, in bytes, of each buffer that the Distributed site allocates to service download requests. Increasing this may improve file download performance but increases the risk of running the Distributed server out of memory.

- BulkLoadFileFieldDelimiter

Section	Relativity.Data
Value	ppKpp
Description	The value used to separate fields when loading bulk files into the SQL database. Line delimiters are this value plus a new line.

2.5 C

- CacheLocationLowerThreshold

Section	Relativity.Core
Value	30
Description	Specifies the lower limit of the cache size as a percentage of the total space available on the drive where the cache is stored. After the Cache Manager agent runs, the size of the cache table is below its lower limit.
	Note: If you leave this value blank, Relativity uses the default value of 30.

- CacheLocationUpperThreshold

Section	Relativity.Core
Value	70

Description	Specifies the upper limit of the cache size as a percentage of the total space available on the drive where the cache is stored. The cache table must equal or exceed this upper limit before the Cache Manager clears entries from it. If you leave this value blank, Relativity uses the default value of 70.
-------------	--

- CacheManagerFileDeletionRetry

Section	Relativity.Core
Value	3
Description	Determines the number of attempts the Cache Manager tries to delete a specific file.

- CacheManagerFileDeletionWait

Section	Relativity.Core
Value	1000
Description	The amount of time, in milliseconds, that the Cache Manager waits before retrying to delete a file.

- CancelRequestEnabled

Section	Relativity.Core
Value	True
Description	Determines whether the option to cancel requests is available to Relativity users. If set to True, users can see an overlay window with the option to cancel the request and a message indicating that items are loading. If set to False, this functionality is not available.

- CancelRequestInitialPollingInterval

Section	Relativity.Core
Value	100
Description	The initial time interval, in milliseconds, used for polling the cache on the web server during the first second of a cancel query request. After the first second, the time interval increases to 450 msec.

- CancelRequestTimeDelay

Section	Relativity.Core
Value	3
Description	The time delay, in seconds, between the initiation of a search request and the appearance of an overlay window with the option to cancel the request.

- CasesForGroupsViewID

Section	kCura.EDDS.Web
Value	900
Description	Identifies the ArtifactID of the view that displays the workspaces at the bottom of a group page.

- CaseStatisticsBasedLockout

Section	kCura.LicenseManager
---------	----------------------

Value	blank
Description	Determines if the Case Statistics based lockout is active. If set to On, the Case Statistics based lockout is active. If set to Off, the Statistics based lockout is inactive.

- CaseStatisticsNotificationIncludeEmails

Section	kCura.LicenseManager
Value	True
Description	Determines whether to show the email and original email address fields in the Case Statistics and User Rollup scripts. If set to True, this instance setting populates the email and original email address fields in the Case Statistics and User Rollup scripts. If set to False, those fields are retrieved as empty.

- CaseStatisticsNotificationList

Section	kCura.LicenseManager
Value	blank
Description	The distribution list for Case Statistics reports. It expects a semicolon-delimited list of email addresses to send the report to. If empty, emails are not sent.

- ChoiceLimitForUI

Section	Relativity.Core
Value	200
Description	Determines the maximum number of choices and single objects that can be rendered in a checkbox, drop-down menu, or radio button list before switching to a pop-up picker. For the best performance, we recommend setting this value to 15. If this is not set, lists automatically render as pop-up pickers.

- ChunkEnabledQueryChunkSize

Section	Relativity.Data
Value	10000
Description	Determines the number of artifacts, specifically choices and folders, in a set that the Desktop Client can pull down.

- ClassificationCategorizationDelay

Section	Analytics.Core
Value	5
Description	The interval, in minutes, at which the Categorization Set agent checks if there are untrained coding decisions. If there is a change in coding decisions, but no new changes since the last interval check, a build will commence.

- ClassificationCategorizationMaxDelay

Section	Analytics.Core
Value	20
Description	The maximum amount of time, in minutes, the Categorization Set agent will go without categorizing if there is a change in coding decisions.

- ClientBatchSize

Section	Relativity.Telemetry
Value	500
Description	The size of batches used for flushing non-aggregated metrics in the client-side queues. This instance setting is available only when you install telemetry in your environment.

- ClientConfigUpdateInterval

Section	Relativity.Telemetry
Value	15
Description	The interval in seconds between updates to the configuration of the client-side metrics queues. This instance setting is available only when you install telemetry in your environment.

- ClientDomainsFeatureAvailable

Section	Relativity.Core
Value	False
Description	Determines the visibility of the values that allow a client to become a client domain. If set to True, features related to client domains are visible and available inside the environment. If set to False, users do not see anything related to client domains.

- ClientFlushTimeout

Section	Relativity.Telemetry
Value	5
Description	The number of seconds between each flush of the client-side queue. When the queue is flushed, the service bulk posts any content that it contained to the Kepler endpoint. This instance setting is available only when you install telemetry in your environment.

- CloudInstance

Section	Relativity.Core
Value	False (recommended value)
Type	Text
Description	This setting controls cloud specific behavior. For Relativity Server, we support the configuration where the instance setting is not present, and the configuration where the instance setting is False. The value of True is only supported in R1 instances, and should never be used for Relativity Server.

- CompareWebAPIPath

Section	kCura.EDDS.Web
Value	Set during Relativity installation
Description	Identifies the Compare Web API path.

- CompressionLevel

Section	kCura.ARM
Value	0

Description	The compression level to be used for determining zip compression when archiving a workspace using ARM. Set this to 0 if you do not wish to compress the workspace files. For minimum Compression set this to 1 and for maximum compression, set this to 9. You can enter any value in this range to set the level of compression.
-------------	---

- ConcurrentLogin

Section	kCura.LicenseManager
Value	per system
Description	Determines the setting for requiring the Concurrent User Login restriction. A tool that the engineering teams own must change this value; the default value is Off.

- ContentAnalystAdvancedOptionsURLBase

Section	Relativity.Core
Value	blank
Description	Specifies the URL base of the advanced options page for indexes that the Content Analyst web front-end provides. If this is set to an empty string, the value is automatically deduced by looking at the value of ContentAnalystWebServicesURLBase.

- ContentAnalystDefaultDimensions

Section	Relativity.Core
Value	100
Description	Determines the number of default dimensions specified for new Content Analyst indexes.

- ContentAnalystDefaultNumberOfProcessors

Section	Relativity.Core
Value	2
Description	Indicates the number of processors that a single Analytics index uses for a build. Increasing the number of processors to a value greater than two may slow the performance of the Analytics server. You must adjust any setting modifications to the requirements of your environment.

- ContentAnalystFileMaxByteThreshold

Section	Relativity.Core
Value	524288000
Description	This was deprecated in Relativity 8.1. Changing this value has no effect on the environment.

- ContentAnalystMaximumBatchSize

Section	Relativity.Core
Value	1000
Description	Determines the maximum number of documents that can be sent to the Content Analyst engine at once. This is one of the variables used to determine when the Content Analyst Index Manager sends a batch of documents to the Content Analyst engine. Increasing this value may lead to better performance, because higher values allow for

larger sets of documents to be sent to the Content Analyst engine. At a certain point, this number may become so large that it actually decreases performance because the agent needs to update the status of all the documents in a batch at the same time on the population table. This instance setting has no effect on memory usage.

- ContentAnalystMaxConnectorsPerIndexDefault

Section	Relativity.Core
Value	4
Description	Determines the default maximum number of connections allowed between the Analytics server and SQL for each index that uses this server.

- ContentAnalystMaxTotalConnectorsDefault

Section	Relativity.Core
Value	50
Description	Determines the maximum number of connections allowed between the Analytics server and SQL across all indexes using this server.

- ContentAnalystSimilarDocsJobType

Section	Relativity.Core
Value	0
Description	Determines the default similar documents job type to submit to Content Analyst, comprehensive.

- ContentAnalystSingleRecordMaxByteThreshold

Section	Relativity.Core
Value	31457280
Description	This setting was deprecated in Relativity 8.1. Changing this value has no effect on the environment.

- ContentAnalystSmartTrainOnByDefault

Section	Relativity.Core
Value	True
Description	Determines whether Analytics indexes are enabled by default to use the Optimize training set functionality, which automatically excludes conceptually-irrelevant documents from an index's training data source. If set to True, Analytics indexes use the Optimize training set functionality. If set to False, Analytics indexes do not use the Optimize training set functionality

- ContentAnalystTemporaryDirectory

Section	Relativity.Core
Value	blank
Description	This was deprecated in Relativity 8.1. Changing this value has no effect on the environment.

- ContentAnalystTemporaryDirectory

Section	Relativity.StructuredAnalytics
Value	blank
Description	This setting was deprecated in Relativity 8.1. Changing this value has no effect on the environment.

- ContentAnalystUpdateBatchSize

Section	Relativity.Core
Value	50000
Description	Determines the number of documents per batch to update the non-similar documents in the documents table.

- ContentAnalystWebServicesMaxByteThreshold

Section	Relativity.Core
Value	31457280
Description	This setting was deprecated in Relativity 8.1. Changing this value has no effect on the environment.

- ContentAnalystWebServicesURLBase

Section	Relativity.Core
Value	http://localhost:8080/CAT/services/
Description	This setting was deprecated in Relativity 7.5. Changing this value has no effect on the environment.

- ConversionBatchSize

Section	Relativity.Conversion
Value	500
Description	Determines the maximum number of documents to submit for conversion at a time when running an imaging set.
	Note: This instance setting must be manually added to your environment.

- ConversionConvertAheadThreadCounts

Section	Relativity.Core
Value	0
Value type	Integer 32-bit
Description	The maximum amount of threads that a Conversion Agent - Convert Ahead will use on its agent server.

- ConversionOnTheFlyThreadCounts

Section	Relativity.Core
Value	0
Value type	Integer 32-bit
Description	The maximum amount of threads that a Conversion Agent - On the Fly will use on its agent server.

- ConversionPublishBatchSize

Section	Relativity.Conversion
Value	500
Description	Determines the maximum number of messages to submit at one time in a given conversion batch.

- ConversionMassConvertThreadCounts

Section	Relativity.Core
Value	0
Value type	Integer 32-bit
Description	The maximum amount of threads that a Conversion Agent - Mass Convert will use on its agent server.

- ConversionRequestTimeout

Section	Relativity.Conversion
Value	1
Description	The amount of time, in minutes, before Relativity checks to see if Invariant has started working on a conversion job that Relativity sent to it.

- CookieDuration

Section	Relativity.Authentication
Value	600
Description	Sets the number of minutes that the authentication cookie is valid. This value controls the length of time that the users are logged in to Relativity before the system automatically logs them off and requires them to re-authenticate. This configuration value supports a maximum setting of 1440 minutes, or 24 hours, and a minimum setting of 240, or 4 hours. You must reset the IIS for these changes to take effect.

- CookieHttpOnly

Section	Relativity.Authentication
Value	True
Description	Controls access to cookies. If set to True, this instance setting prevents access to cookies by JavaScript and other client-side elements. This flag is designed to attach to sensitive cookies such as the session cookie ASP.NET_SessionId.
Recommended security value	<ul style="list-style-type: none"> ○ Keep at default, unless your organization wants to further limit the amount of time one user's Relativity session will last. ○ Limiting this value decreases the chance an attacker could compromise the authentication cookie.

- CookieSecure

Section	Relativity.Authentication
Value	True
Description	Controls how the web browser sends session information. If set to True, this instance setting forces a web browser to send session information over HTTPS only. This flag is designed to attach to sensitive cookies such as the session cookie

	ASP.NET_SessionId. When set to True, users cannot log in to Relativity over HTTP.
Recommended security value	True - this ensures that, cookies, including sessions cookies, are encrypted over a secure SSL/TLS channel instead of being sent in cleartext. Once set to True, users must always access Relativity over HTTPS instead of HTTP.

- CopyFilesToRepository

Section	kCura.EDDS.WinForms
Value	True
Description	Determines the default value that appears in all import and export forms within the Relativity Desktop Client for the copy files to repository value.

- CreateCaseTimeoutValue

Section	Relativity.Data
Value	1800
Description	The timeout value, in seconds, associated with running queries related to case creation.

- CreateZSRTablesForSTRs

Section	Relativity.Core
Value	True
Description	Controls whether search term reports create ZSR tables. If set to True, search terms reports create ZSR tables, caching the results for future use. This improves performance, but may make rebuilding and deleting indexes take longer. If set to False, building search terms reports may take longer. Fewer tables are left in the database, potentially resulting in faster dtSearch index builds.

- CustomPageDeletionDelay

Section	kCura.Relativity.WebProcessing
Value	600
Description	The amount of time, in seconds, that the system will wait before removing previous versions of a deployed custom page.

- CustomPageDeploymentManagerSleepTime

Section	kCura.Relativity.WebProcessing
Value	0
Description	The number of seconds the Custom Page Deployment Manager Agent will wait for a new version to become available.

- CustomPageDeploymentPath

Section	kCura.Relativity.WebProcessing
Value	blank
Description	The server path that a Custom Pages will be deployed to. The MachineName should be set for each web server. If not set, Custom Pages will be deployed relative to the Relativity Web installation path.

- CustomPageManagerIsOffHourAgent

Section	kCura.EDDS.Agents
Value	True
Description	Controls whether the Application Manager agent behaves as an off hour agent. If set to True, applications containing custom components only deploy between the hours set in the AgentOffHourStartTime and AgentOffHourEndTime values. If an application deploys when the AgentOffHourEndTime passes, the current deployment completes and no new deployments occur until the next AgentOffHourStartTime. If set to False, the Application Manager agent runs normally, and applications containing custom pages are identified and deployed in the typical process.

2.6 D

- DatabaseQuery

Section	kCura.EDDS.Procuro
Value	<pre>SELECT CAST(1 AS BIT) AS [, ' N/A' as ArtifactID, 'EDDS' as [Name], @@SERVERNAME as [Location], 'N/A' as [CaseStatus], " as [UpgradeStatus] UNION SELECT CAST(1 AS BIT) AS [, CAST([Case].[ArtifactID] AS VARCHAR(20)), [Case].[Name], [ResourceServer].[Name] as [Location], [Code].Name as Status, " as [UpgradeStatus] FROM [Case] INNER JOIN [Code] ON [Code]. ArtifactID = [Case].StatusCodeArtifactID INNER JOIN [Artifact] ON [Artifact].[ArtifactID] = [Case]. [ArtifactID] AND [Artifact].[DeleteFlag] = 0 INNER JOIN [ResourceServer] ON [Case].[ServerID] = [ResourceServer].[ArtifactID]</pre>
Description	Defines the query that Procuro uses to determine the list of databases available for upgrading.

- DataCenter

Section	kCura.Billing
Value	Blank string ("")
Description	Identifies the geographical location of the facility where a Relativity instance is housed. The Case Statistics Manager agent includes this location in the RelativityVersion.txt metadata file that it generates.

- DataDirectory

Section	kCura.EDDS.SqlServer
Value	During Relativity installation
Description	Identifies the path to the data directory that SQL Server uses. This value should be relative to the server where SQL Server is installed.

- DataFocusModeDefault

Section	kCura.EDDS.Web
Value	Off
Description	Controls the default Interface Mode for users. If set to On, the default Interface Mode for users is Data Focus On. If set to Off, the default Interface Mode for users is Classic (No Data Focus).

- DataGridEndPoint

Section	Relativity.DataGrid
Value	
Description	Defines the end point for Data Grid connection. This value is required to activate Data Grid operation for this Relativity instance (http://client:9200).

- DataGridHttpClientTimeout

Section	kCura.Audit
Value	100
Description	This value is used to set the default value for the HttpClient timeout value for DataGridHttpClient specified in seconds.

- DataGridHttpClientTimeout

Section	Relativity.DataGrid
Value	100
Description	The default value, in seconds, for the HttpClient timeout value for DataGridHttpClient.

- DataGridIndexCreationSettings

Section	Relativity.DataGrid
Value	<pre> "template": "text_*", "mappings": { "text": { "_id": { "path": "artifactID" } }, "childtext": { "_parent": { "type": "text" } } } } </pre>
Description	Defines a template to create new indexes for Data Grid.

Note: This instance setting must be manually added to your environment.

■ DataGridIndexPrefix

Section	Relativity.DataGrid
Value	relativity
Description	Constructs index names for Data Grid to distinguish multiple Relativity instances that write to the same Data Grid cluster.

■ DataGridMultiIndexSplitSizeThreshold

Section	kCura.Audit
Value	30 GB (32212254720 bytes)
Description	Determines the maximum size, in bytes, of each shard in the Data Grid index before Relativity creates a new index. Writing to an index that is over the threshold causes Relativity to create a new index. Set this to 0 to disable the threshold behavior.

■ DataGridMultiIndexSplitSizeThreshold

Section	Relativity.DataGrid
Value	30GB (32212254720 bytes)
Description	Determines the maximum size, in bytes, of each shard in the Data Grid index before Relativity creates a new index. Writing to an index that is over the threshold causes Relativity to create a new index. Set this to 0 to disable the threshold behavior.

■ DataGridNumberOfRetries

Section	Relativity.DataGrid
Value	3
Description	Determines the number of attempts made by the Data Grid to perform an operation before it returns as a failure.

■ DataGridNumberOfRetries

Section	Relativity.Audit
Value	3
Description	Number of attempts made by the Data Grid to perform an operation before it returns a failure.

■ DataGridPayloadByteSizeThreshold

Section	Relativity.DataGrid
Value	1048576
Description	Determines the size, in bytes, of the internal write batch size for Data Grid.

■ DataGridRESTservicePort

Section	Relativity.DataGrid
Value	9400
Description	Defines the port number that is used to connect JAVA CA connector to Data Grid REST service.

- **DataGridRetryWaitTime**

Section	Relativity.DataGrid
Value	50
Description	The amount of time, in milliseconds, that Data Grid waits between operation retries.

- **DataGridRetryWaitTime**

Section	Relativity.Audit
Value	50
Description	The amount of time, in milliseconds, that Data Grid waits between operation retries.

- **DataGridScanScrollBatchSize**

Section	kCura.Audit
Value	1000
Description	Determines the maximum batch size that Data Grid will attempt to read audits while performing an audit export operation. Default batch size set to 1000

- **DataGridSearchCacheProviderTimeout**

Section	Relativity.Data
Value	60
Description	The number of seconds that the workspace Last Update Time cache will be used from memory before refreshing with data from the Data Grid. Value 0 means the default value is used.

- **DataGridSearchIndex**

Section	Relativity.DataGrid
Value	0
Description	Enumeration specifying the default search index for Data Grid. 0:None, 1:Lucene.

- **DataGridSqlTimeout**

Section	kCura.Audit
Value	30
Description	The amount of time, in seconds, that Data Grid waits for SQL read operations to complete.

- **DataGridVerification**

Section	Relativity.DataGrid
Value	False
Description	This instance setting enables post import data verification.

- **DataGridVerificationTimeout**

Section	Relativity.DataGrid
Value	30
Description	Determines the time span upon which post import data verification occurs.

- **DeepPagingThreshold**

Section	kCura.Audit
Value	1000000000
Description	If a workspace has a greater number of audits than this threshold, then paging will be restricted to DeepPagingMaxPages.

- DeepPagingMaxPages

Section	kCura.Audit
Value	100
Description	Maximum number of pages allowed to browse through Audits when a workspace has a number of audits greater than DeepPagingThreshold.

- DefaultCaseDownloadHandlerApplicationPath

Section	kCura.EDDS.Web
Value	During Relativity installation
Description	Defines the value that populates in the Download Handler URL field by default for new cases. If you enter a URL for this value, the protocol must match what is used in the browser. If Relativity is set up to use either HTTP or HTTPS, but not both, you can enter a full URL. If Relativity is set up to use both HTTP and HTTPS, do not specify the protocol in this value.

- DefaultBrandingFont

Section	Relativity.Production
Value	Arial
Description	The default branding font to be used in a production.

- DefaultBrandingFontSize

Section	Relativity.Production
Value	10
Description	This setting defines default branding font size for production. Font Size must be an integer between 8 and 30. If you set a value less than 8 or more than 30, the value will automatically update to 8 and 30 respectively.

- DefaultOIHiliteStyleID

Section	kCura.Code.Data
Value	3
Description	Determines the default OIHiliteStyle associated with new choices. Valid values are defined on the OIHiliteStyle table. Look within a workspace database, not the EDDS database.

- DefaultNativeImagingEngineURL

Section	Relativity.Core
Value	Determined during native imaging installation; manually entered in instance setting after native imaging installation is completed.
Description	This setting was deprecated in Relativity 7.5. Changing this value has no effect on the environment.

- **DefaultQueryTimeout**

Section	kCura.AssistedReview
Value	30
Description	The timeout value, in seconds, used by default for all AssistedReview queries.

- **DefaultSqlCommandTimeout**

Section	kCura.Data.RowDataGateway
Value	30
Description	The default wait time, in seconds, before terminating the attempt to execute a SQL command and generating an error. The value can be set globally or for a specific machine. The minimum possible value for this setting is 15 seconds and anything below that will result in a 15 second timeout. This value can be overridden by areas of the system where SQL execution is known to take longer. For example, you can use the MaxPDVQueryLength instance setting to configure the timeout value for list view queries.

- **DefaultTextRedactionTextSize**

Section	kCura.EDDS.Web
Value	-1
Description	Determines the font size when a user draws a text redaction for the first time that session. -1 is auto mode.

- **DefaultUseRelativityFormsValue**

Section	kCura.EDDS.Web
Value	False
Description	Enables or disables the rendering of Relativity dynamic object pages in a modern architecture. If True, the Object Type will be rendered using Relativity Forms when it has a null value for the Use Relativity Forms field. Otherwise, it will be rendered using Classic.

- **DeleteFileErrorsLoggedAsWarnings**

Section	Relativity.Conversion.Cache
Value	False
Description	Determines the log level applied to delete file error log entries. If set to True, delete file errors are logged using a Warning log level. If set to False, delete file errors are logged using a Debug log level.

- **DeleteFileWorkerBatchSize**

Section	Relativity.Conversion.Cache
Value	250
Description	Specifies the delete file worker batch size to determine the max number of SQL identifiers contained within each message.

- **DeleteFileWorkerParallelLinqEnabled**

Section	Relativity.Conversion.Cache
Value	True

Description	Determines whether PLINQ is used to optimize enumerating or deleting cached files in parallel.
-------------	--

- DeleteProductionFilesBatchSize

Section	Relativity.Production
Value	10000
Description	Determines the maximum number of produced files the Production agent can delete in a single batch.

- DeobfuscateMapsFolderPath

Section	Relativity.Core
Value	\\Relativity\EDDS\Maps folder
Description	Identifies the folder where the obfuscation map files are stored for use in the Stack Trace Deobfuscation Tool. If not set, the Stack Trace Deobfuscation Tool uses the ..\Relativity\EDDS\Maps folder.

- DeveloperMode

Section	Relativity.Core
Value	False
Description	Controls developer mode options within an instance of Relativity. Setting this value to True enables developer mode options. Setting this value to False disables developer mode options. These options include disabling the cross-site request forgery (CSRF) header requirement in the API and returning detailed error messages such as stack traces. Enable this setting only in a development environment.
Recommended security value	False - Setting this value to false will cause Relativity to enforce the cross-site request forgery (CSRF) header requirement in the API and stop sending detailed error messages like stack traces.

- DisabledUserMessage

Section	kCura.EDDS.Web
Value	Your Relativity Administrator
Description	Determines the contact specified within the message that appears when a user does not have access to Relativity.

- DiskSpaceAlertUpperThreshold

Section	Relativity.Conversion.Cache
Value	70
Description	Specifies the upper limit of the cache size as a percentage of the total space on the drive where the cache is stored. The Conversion Cache Manager creates an alert when the disk usage exceeds this value; otherwise, the alert is removed.

- DisplayDisclaimer

Section	Relativity.Authentication
Value	False
Description	Sets the disclaimer display when users log in to Relativity. If True, displays the dis-

claimer. If False, does not display the disclaimer.

- DisplayHelpLink

Section	Relativity.Core
Value	True
Description	Controls whether the Help link appears for all non-system admins. Setting this value to False removes the Help link from the UI.

- DisplayLogoInTitleBar

Section	kCura.EDDS.Web
Value	False
Description	Controls whether the company logo appears in the top action bar. If set to True, the company logo appears in the top action bar.

- DistinctBuilderMaxValue

Section	Relativity.Data
Value	255
Description	The maximum number of values allowed in a choice field before it changes from a picker in the item list to disabled. For non-required fields, null, or empty, values count towards the maximum number.

- DocumentLimitForMassImaging

Section	Relativity.Imaging
Value	10,000
Description	The maximum number of documents that can be submitted for the Mass Imaging action. If a user attempts to mass image and the number of documents selected exceeds this value, a warning appears to prevent the user from performing this action to suggest creating an Imaging Set as best practice.

- DocumentSkipDefaultBehaviorDefault

Section	kCura.EDDS.Web		
Value	True		
Description	Determines the default value displayed in the Skip Default Preference field on the Add User form. The UI displays Skip when this instance setting value equals True, and it displays Normal when it equals False. This setting is only valid if DocumentSkipEnabledDefault is set to True.		
	DocumentSkip EnabledDefault	DocumentSkip DefaultBehaviorDefault	Skip Default Preference field (UI display)
	Enabled	True	Skip
	Enabled	False	Normal
	Disabled	Setting Ignored	Normal (Read-only)
Force Enabled	Setting Ignored	Skip (Read-only)	

- DocumentSkipEnabledDefault

Section	kCura.EDDS.Web		
Value	Enabled		
Description	Determines the default value displayed in the Document Skip field on the Add User form. Acceptable values are Enabled, Disabled, and Force Enabled. When this option is Enabled, the value for DocumentSkipDefaultBehaviorDefault controls the default option displayed in the Skip Default Preference field. When this option is set to Disabled, or Force Enabled, the Skip Default Preference field displays the read-only value of Normal or Skip, respectively.		
	DocumentSkip EnabledDefault	DocumentSkip DefaultBehaviorDefault	Skip Default Preference field (UI display)
	Enabled	True	Skip
	Enabled	False	Normal
	Disabled	Setting Ignored	Normal (Read-only)
	Force Enabled	Setting Ignored	Skip (Read-only)

- DocumentSkipLookaheadLength

Section	kCura.EDDS.Web		
Value	1000		
Description	Determines the progressive number of documents, starting with the current +1, that the system will evaluate against the current view or saved search criteria when Document Skipping is enabled. System default is 1000 documents, set to -1 for all documents.		

- DocumentSkipNoMoreDocumentsMessage

Section	kCura.EDDS.Web		
Value	Document Skip is enabled. The remaining documents in your queue no longer meet the conditions of your view or search. If you are done with these records, click \"Return to document list\". If you would like to see the remaining records, change your view from \"Skip\" to \"Normal\".		
Description	Determines the text in the notification sent to a user when Document Skip is enabled, and no more documents fit the saved search/view criteria.		

- DocumentSkipToolTip

Section	kCura.EDDS.Web		
Value	This checkbox will enable you to bypass documents which already meet the criteria of this saved search/view.		
Description	Determines the text in the document skip tool tip message displayed in the document profile.		

- DocumentTimeout

Section	kCura.EDDS.Web		
Value	120000		
Description	The amount of time, in milliseconds, until the Viewer will timeout when attempting to retrieve a document.		

- DocumentViewerSleepTime

Section	Relativity.Core
Value	500
Description	Document viewer can load to sleep, in milliseconds, if it encounters a file exception while trying to load the file.

- **DomainNameWhiteListUrls**

Section	kCura.EDDS.Web
Value	* (all URLs are accepted)
Description	Defines the allowable list of external domains available for navigation or display within a tab. Semicolon-delimited list of whitelisted domains. For example, "google.-com;mozilla.org".

- **DomainParsingSingleRecordMaxByteThreshold**

Section	Relativity.Data
Value	1048576
Description	The maximum length, in bytes, of a record that the Domain Parsing tool will parse. The Domain Parsing tool will not parse a record with a value that exceeds this length.

- **dtSearchDataGridBufferSize**

Section	Relativity.Data
Value	16777216
Description	The size, in bytes, of the cache used to bulk read non-streamable documents from Data Grid to dtSearch.

- **dtSearchDefaultAlphabetFileText**

Section	Relativity.Core
Value	Listed in dtSearch default alphabet file text in the Searching guide.
Description	Determines the default value of the text for the Alphabet file when creating a new dtSearch index. Acceptable values are listed in the dtSearch default alphabet file text page in our documentation.

- **dtSearchDefaultSubIndexFragmentationThreshold**

Section	Relativity.Core
Value	9
Description	Determines the default value for the Sub-index fragmentation threshold field on the dtSearch Index Information screen. The value must be an integer greater than or equal to 1. When the fragmentation level for a sub-index equals or exceeds the threshold level, the system automatically compresses the sub-index during an incremental build.

- **dtSearchDefaultSubIndexSize**

Section	Relativity.Core
Value	250000
Description	Determines the maximum number of documents to build into each sub-index. The dtSearch Index Manager uses this value to determine how many sub-indexes will make up the entire index. This value appears by default in the Sub-index size field when creating a dtSearch.

- dtSearchEnableMetricsLogging

Section	Relativity.Data
Value	0
Description	Determines if dtSearch Metrics gathering should be enabled for Performance testing or Troubleshooting. This is a Bit value.

- dtSearchPopulationLogFilePath

Section	Relativity.Core
Value	blank
Description	Identifies a path to a file on the disk when diagnosing dtSearch problems related to populating indexes. Setting this instance setting causes dtSearch to write debugging information to the disk. This file itself does not need to exist, but the path to it does. Ensure you change this value to blank when you no longer need the file log because it can grow in size very quickly.

- dtSearchQueryLogFilePath

Section	Relativity.Core
Value	blank
Description	Identifies a path to a file on the disk when diagnosing dtSearch problems related to performing searches. Setting this value causes dtSearch to write debugging information to the disk. This file itself does not need to exist, but the path to it does. Ensure you change this value to blank when you no longer need the file log because it can grow in size very quickly.

- dtSearchStreamBufferSize

Section	Relativity.Data
Value	1048576
Description	Determines the size, in bytes, of the buffer used within the dtSearchStream object. This buffer is allocated into memory as soon as the agent starts. Relativity checks to see if the value has changed between jobs and reallocates the buffer if a change is detected. Increasing this value may slightly improve build times, but requires the agent server to use additional memory.

- dtSearchStreamThresholdInBytes

Section	Relativity.Data
Value	1048576
Description	Determines the maximum size of all text associated within a document before the text is streamed directly into dtSearch. The dtSearch Index Managers uses this value when populating an index. If the size of all the text associated with a document is larger than this value, the text is streamed directly into dtSearch. Otherwise, the text is converted to bytes and the bytes are sent to dtSearch. Increasing this value may slightly improve build times, but will increase the chance of your agent server running out of memory.

- dtSearchWorkerProgressThreshold

Section	Relativity.Data
---------	-----------------

Value	1000
Description	Determines the number of documents a worker agent sends to the dtSearch engine before reporting progress back to the database. Changing this value may have an impact on performance.

- DynamicReviewQueueAutoConvert

Section	Relativity.Core
Value	True
Description	Indicates whether or not documents will be automatically converted when added to a Dynamic Review Queue.

- DynamicReviewQueueInsertBatchSize

Section	Relativity.Data
Value	500
Description	How many documents to insert into a Dynamic Review Queue at once.

2.7 E

- EDDSFileShare

Section	Relativity.Data
Value	During Relativity installation
Description	Identifies the location used for the primary-level file share. If you change the location, make sure to share the new directory.

- ElasticsearchMajorVersion

Section	kCura.Audit
Value	2
Description	Specifies the major version of Elasticsearch that the cluster is running

- EmailFrom

Section	kCura.Notification
Value	blank
Description	Determines the email address populated in the From field when sending email notifications. The email address must be valid. Email aliases can be entered in this format: Alias Name <username@example.com>

- EmailLinkURLOverride

Section	kCura.EDDS.Web
Value	https://relativity.relativity.com
Description	Specifies the URL for the server if it's behind a load balancer or a firewall with HTTPS handled by the firewall or load balancer. Set this instance setting only when the URL used to access Relativity by end users is not the actual URL of the Relativity web server. The Viewer's Email Link to Document functionality uses this setting. Format: https://servername

- EmailTo

Section	kCura.Notification
Value	blank
Description	Determines the email address populated in the To field when sending email notifications. The email address must be valid. Separate multiple email addresses with a semicolon.
Note: This instance setting must be manually added to your environment.	

- EnableCustomPageReadinessCheck

Section	kCura.Relativity.WebProcessing
Value	True
Description	When true, the Custom Page Deployment Manager will attempt to invoke an application's custom page readiness endpoint before routing requests to its web pages. The optional readiness endpoint can be configured by application developers to provide a way of performing start up tasks.

- EnableCustomerLockbox

Section	Relativity.Core
Value	False
Description	If this is set to True, users must belong to a security Group with access to the workspace they want to access other than System Administrators to access this workspace. If the instance setting is set to False, the system behaves as it always has and system administrator access is sufficient in order to access any workspace.

- EnableDocumentPreview

Section	Relativity.ReviewInterface
Value	True
Description	If this is set to True, the Viewer is available as a preview panel in the document list for users with appropriate permissions. If the instance setting is set to false, the preview panel is not available in the document list.

- EnableDocumentViewerProgressiveLoad

Section	kCura.EDDS.Web
Value	True
Description	If this is set to True, the Viewer, which displays the document, will load first. This is followed by the navigation toolbar above the Viewer and the coding pane to the right which contains the layout. If this is set to False, the navigation toolbar and the coding pane begin loading at the same time. The Viewer begins loading as soon as the navigation toolbar has loaded.

- EnableNativeRedactions

Section	kCura.EDDS.Web
Value	True
Description	Determines whether native highlighting, redactions, links, and tagging are enabled. If set to True, these actions are enabled. If set to False, these actions are disabled.

Redactions and highlighting can be used on transcripts.

Note: This instance setting must be manually added to your environment.

- EnablePublishErrorAutoRetry

Section	Relativity.Core
Value	True
Description	Determines whether Processing publishing will automatically reduce the number of threads in use. This only occurs in deadlock or timeout scenarios during publish. Keeping the value at True can impact publish performance.

- EnableSmartPipeline

Section	Relativity.Core
Value	True
Description	Determines whether the ability to use SmartPipeline on Analytics Index is enabled. If set to True, this action is enabled. If set to False, these actions are disabled.

- EnableUserGroupOptimization

Section	Relativity.Core
Value	False
Description	Allows administrators to turn-off email notifications for when users or groups are added or deleted.

- EnforceHttps

Section	Relativity.Authentication
Value	Warn
Description	Controls how Relativity Service Host handles HTTP/HTTPS traffic. Values include On, Off, and Warn. If set to On, this instance setting forces Service Host to use HTTPS only. If set to Off, HTTP traffic is allowed. If Warn, the browser and all API endpoints will allow any traffic but will log a warning. The default value is Warn. On - make sure to add a certificate to the Personal certificate store of the Computer Account on all web and agent servers. If the certificate is self-signed, you must add it to both the Personal and the Trusted Root Certification Authorities certificate stores for the Computer Account on all web and agent servers. It is also a requirement that you edit the value of the KeplerServicesUri instance setting and the KeplerServicesUriForAgents instance setting to reflect HTTPS. This requires Service Host traffic to be encrypted with SSL/TLS in order to not send in cleartext.
Recommended security value	

- EnvironmentData

Section	kCura.LicenseManager
Value	xxxx
Description	Do not modify without advice from Relativity Customer Support. Determines encrypted data about your environment. Changing this shuts down Relativity.

- EnvironmentName

Section	kCura.Notification
Value	DefaultRelativityEnvironmentName
Description	Defines the name of the environment. This value is used when sending notifications. You should update the default value to a setting appropriate for use in your environment.

- EnvironmentPubToken

Section	kCura.LicenseManager
Value	xxxx
Description	Do not modify without advice from Relativity Customer Support. Defines Relativity ODA LLC's public key.

- ESIndexCreationSettings

Section	kCura.Audit
	Click here to view default Data Grid template
Value	<pre> { "order": 0, "index_patterns": ["audit_*"], "settings": { "index": { "max_result_window": "2147483647", "analysis": { "filter": { "substring": { "type": "nGram", "min_gram": "1", "max_gram": "20" } }, "analyzer": { "lwhitespace": { "filter": ["lowercase"], "tokenizer": "whitespace" }, "str_index_analyzer": { "filter": ["lowercase", "substring"] } } } } } </pre>

```

    ],
    "tokenizer": "keyword"
  },
  "str_search_analyzer": {
    "filter": [
      "lowercase",
      "substring"
    ],
    "tokenizer": "keyword"
  }
},
"number_of_shards": "1",
"number_of_replicas": "1"
},
"mappings": {
  "audit": {
    "dynamic_templates": [
      {
        "details_run_item_as_text": {
          "path_match": "Details.auditEle-
ment.run.item.*",
          "mapping": {
            "fields": {
              "keyword": {
                "type": "keyword"
              }
            },
            "type": "text"
          }
        }
      },
      {
        "raw": {
          "match_pattern": "regex",
          "path_match": "Details\\.auditEle-
ment\\.\\.\\.*",
          "mapping": {
            "type": "text",
            "fields": {
              "raw": {
                "analyzer": "lwhitespace",
                "type": "text"
              }
            }
          }
        }
      }
    ]
  }
}

```

```

: ".*\\.oldValue$",
    "mapping": {
      "type": "text",
      "fields": {
        "raw": {
          "analyzer": "lwhitespace",
          "type": "text"
        }
      }
    },
    {
      "analytics_text": {
        "match_pattern": "regex",
        "path_match": ".*\\.#text$",
        "mapping": {
          "type": "text",
          "fields": {
            "raw": {
              "analyzer": "lwhitespace",
              "type": "text"
            }
          }
        }
      }
    },
  ],
  "properties": {
    "Guid": {
      "type": "keyword"
    },
    "ActionName": {
      "type": "keyword"
    },
    "UserName": {
      "type": "keyword"
    },
    "Details.auditElement.field.@id": {
      "type": "keyword"
    },
    "TimeStamp": {
      "format": "strict_date_optional_
time||epoch_millis",
      "type": "date"
    }
  }
},

```

Description	Defines a template to create new indexes for Data Grid. <hr/> Note: This instance setting must be manually added to your environment.
-------------	---

- ESIndexPrefix

Section	kCura.Audit
Value	
Description	Constructs index names for Data Grid. This instance setting can be used to distinguish multiple Relativity instances that write to the same Data Grid cluster. <hr/> Note: This instance setting must be manually added to your environment.

- ESPayloadSettings

Section	kCura.Audit
Value	
Description	Defines Data Grid settings attached to every payload.

- ExplicitBrowserWhitelist

Section	Relativity.Authentication
Value	Mozilla/[0-9].[0-9] \ (Windows.+; .+; Trident/[7-9].[0-9]; rv:[0-9][0-9].[0-9]) like Gecko\nMozilla/[0-9].[0-9] \ (Windows.+; .+; Trident/[7-9].[0-9]; .+; rv:[0-9][0-9].[0-9])
Description	Do not modify without advice from Relativity Customer Support. A list of regular expressions which are always allowed to access Relativity even if unsupported. Correct function of browsers added to this list by users is not guaranteed. List separated by \n.

- ExportBatchSize

Section	kCura.IntegrationPoints
Value	1000
Description	The number of records being exported in a batch through an Integration Points job.

- ExportEscapedFormulasFromItemListDefault

Section	Relativity.Core
Value	Yes
Description	Yes—escapes excel macro syntax starting characters: [@=+-\$] • No—does not escape excel macro syntax starting characters
Recommended security value	Yes - this will ensure Excel macro syntax starting with [@=+-\$] are always escaped.

- ExportLargeAuditDetails

Section	kCura.Audit
Value	False
Description	If True, audit migration will export audit details with byte size exceeding the setting, DataGridMaximumFieldSizeInBytes, to the workspace's Default File Repository folder location.

- ExportSubdirectoryDigitPadding

Section	kCura.EDDS.WinForms
Value	3
Description	Determines the default value that appears in the Relativity Desktop Client export form for the volume subdirectory digit padding value.

- ExportThreadCount

Section	kCura.IntegrationPoints
Value	4
Description	This value represents the number of threads the RDC uses to export natives, images, productions, and text. The maximum value is 8. This setting defines the amount of threads used for parallelization. It does not affect the performance of RIP jobs. The default value is 4, but for more powerful machines it can be increased to 8.

- ExportVolumeDigitPadding

Section	kCura.EDDS.WinForms
Value	2
Description	Determines the default value that appears in the Relativity Desktop Client export form for the export volume digit padding value.

- Export.LoadFile.ErrorNumberOfRetries

Section	kCura.IntegrationPoints
Value	2
Description	This value controls the number of times the Integration Points retries an operation within an export load file process after a non-IO failure

- Export.LoadFile.ErrorWaitTime

Section	kCura.IntegrationPoints
Value	10
Description	This value sets the number of seconds the Integration Points waits before retrying an operation within an export load file process after a non-IO failure

- Export.LoadFile.IOErrorNumberOfRetries

Section	kCura.IntegrationPoints
Value	2
Description	This value controls the number of times the Integration Points retries an operation within an import or export load file process after IO/WebAPI failure occurs

- Export.LoadFile.IOErrorWaitTime

Section	kCura.IntegrationPoints
Value	20
Description	This value sets the number of seconds the Integration Points waits before retrying an operation within export load file process that encountered an IO/WebAPI failure

- ExternalStylesheetUrls

Section	Relativity.Conversion
Value	blank
Description	Defines the external stylesheets to include in every converted document. These entries are separated by semicolons. By default this is empty.

- **ExpireInactiveJobHours**

Section	Relativity.Conversion.Cache
Value	12
Description	The number of hours of job inactivity before an unfinished job is expired.

2.8 F

- **FavoritesEnabled**

Section	Relativity.Core
Value	TRUE
Description	Determines if Favorites appears in the UI. If set to True, Favorites appears in the UI. If set to False, Favorites does not appear in the UI.

- **FileBrowserMaximumElements**

Section	kCura.EDDS.Agents
Value	1000
Description	Determines the maximum number of files or folders that the directory displays in a file browser.

- **FileDeleteChunkSizeOnDocumentDelete**

Section	Relativity.Data
Value	1000
Description	Determines the number of records that are deleted at once from associated tables when documents are deleted in mass.

- **FileDeletionManagerBatchAmount**

Section	kCura.EDDS.Agents
Value	100
Description	Determines the number of documents that the File Deletion Manager deletes in a single batch.

- **FileTypesToDownloadAsAttachments**

Section	kCura.EDDS.Web.Distributed
Value	txt;vsd;vsdx;xls;xlsx;doc;docx;
Description	A semicolon-delimited list of file extensions, not including periods, users would like to download as attachments rather than inline from the native viewer. For example, txt;vsd;vsdx;

- **FluidReviewQueueSize**

Section	Relativity.Data
Value	5000
Description	The maximum number of documents in a set displayed in the Review Interface. This is set to 5,000 by default.

- ForceWebClientManagerUpgrade

Section	kCura.EDDS.Web
Value	False
Description	Controls whether Internet Explore compares the user's web client manager version to the Relativity version. If set to True, Internet Explorer compares the user's web client manager version to the Relativity version. If the versions do not match, Internet Explorer automatically prompts the user to install a new version of web client manager. If set to False, Internet Explorer does not compare the user's web client manager version to the Relativity version, and it does not prompt the user to install a new version.

- ForgotPasswordRequestBody

Section	Relativity.ForgotPassword
Value	<pre><HTML><BODY> <P>We received a request to reset the password associated with this email address. Click the link below to reset your password. This link will expire after 15 minutes .

 {RESETLINK}

 We recommend opening this link in Internet Explorer.

 You can also copy and paste the following text into your address bar:

 {RESETTEXT}

 If you did not request this change, contact your system admin.

 Please do not reply to this email.

</P></BODY></HTML></pre>
Description	Determines the text in the body of the forgotten password request email message.

- ForgotPasswordRequestCompletedBody

Section	Relativity.ForgotPassword
Value	<pre><HTML><BODY> <P>The password associated with this email address has been successfully reset. Click the link below to login.

 {LOGINLINK}

 We recommend opening this link in Internet Explorer.

 You can also copy and paste the following text into your address bar:

 {LOGINTEXT}

 If you did not request this change, contact your system admin.

 Please do not reply to this email.

</P> </BODY></HTML></pre>
Description	Determines the text in the body of the forgotten password request email message when the request has been completed.

- ForgotPasswordRequestEmailFrom

Section	Relativity.ForgotPassword
Value	PasswordReset@relativity.com
Description	Determines the value in the From field for the forgotten password request email message.

- ForgotPasswordRequestInvalidBody

Section	Relativity.ForgotPassword
Value	<p><HTML><BODY> <P>We received a request to reset the password associated with this email address.</p> <p>

 Your password cannot be reset due to a problem with your account. Contact your system admin for assistance.</p> <p>

 If you did not request this change, contact your system admin.</p> <p>

 Please do not reply to this email.

</P></BODY></HTML></p>
Description	Determines the text in the body of the forgotten password request email message if the user is locked out.

- ForgotPasswordRequestSubject

Section	Relativity.ForgotPassword
Value	Password reset request
Description	Determines the value in the Subject field for the forgotten password request email message.

- FriendlyInstanceName

Section	Relativity.Authentication
Value	Varies (string value)
Description	A friendly name that will display on the user's drop-down menu for the current instance.

- FTDirectory

Section	kCura.EDDS.SqlServer
Value	During Relativity installation
Description	Identifies the path to the full text directory used by SQL Server. This value should be relative to the server where SQL Server is installed.

2.9 G

- GlobalWorkspaceUpgradeLimit

Section	Relativity.Data
Value	4
Description	Determines the global limit on the maximum number of Workspace Upgrade Worker agents that can access any of the SQL Servers in your Relativity environment. Each SQL Server can have a different number of these agents accessing it, but the maximum

number accessing a single server cannot exceed the global limit set in this instance setting. To set the number of agents on a specific server, see Servers on the Documentation site.

2.10 H

■ HeadedLogo

Section	kCura.WorkspacePortal
Value	https://www.relativity.com/app/themes/kcura/assets/img/logo-kcura.png The URL of the image you want to show. The value of this instance setting can support relative and absolute paths. For Relative Path, assume your path is preceded by the URL of your instance. For example, http://relativityvm/relativity/ .
Description	Absolute path sample: https://www.relativity.com/app/themes/kcura/assets/img/logo-kcura.png Relative path sample: images/relativityLogin.png

■ HeaderLogo

Section	kCura.EDDS.Web
Value	blank.gif kcura_blue.png
Description	Identifies the name of the image file Relativity uses for the header. This file must be located within the Images folder.

■ HeaderLogoLarge

Section	kCura.EDDS.Web
Value	blank.gif kcura_blue_50.png
Description	Identifies the name of the large image file Relativity uses for the header. This file must be located within the Images folder.

■ HeartbeatCreateIndexRetryWaitTime

Section	Relativity.DataGrid
Value	5000
Description	Determines the wait time before the final retry attempt at creating new Data Grid index after receiving CreateIndex failed exception

■ HelpLinkURL

Section	kCura.EEDS.Web
Value	<a href="https://help.relativity.com/<RELEASE NUMBER>/Content/index.htm">https://help.relativity.com/<RELEASE NUMBER>/Content/index.htm Specifies the URL for the help link in the user drop-down menu.
Description	Note: This instance setting must be manually added to your environment.

■ HideProcessTranscriptsMassOperation

Section	Relativity.Core
---------	-----------------

Value	True
Description	Controls the default visibility of the Process Transcripts mass operation. If set to True, the Process Transcripts option will be hidden by default in the Mass Operations menu.

- HostNameSiteUrlOverride

Section	Relativity.Authentication
Value	myrelativityURL.company.com
Description	Optional. Specifies an additional public site URL for use with SAML2 or OpenID Connect authentication providers. Create an additional copy of this instance setting for each web server that is used for the specified URL. Machine Name - myWebServer

- HoursToRetainConvertedDocuments

Section	Relativity.Core
Value	72 hours
Description	If the last accessed time is more than the hour limit you select, when UseTimeBasedConvertedCacheManagement is enabled, cache files are deleted.

- HTMLEditorToolbar

Section	kCura.Web.UI.WebControls
Value	[['fontname', 'space', 'fontsize', 'space', 'formatblock', 'space', 'bold', 'italic', 'underline', 'separator', 'strikethrough', 'subscript', 'superscript', 'separator', 'copy', 'cut', 'paste', 'space', 'undo', 'redo'], ['justifyleft', 'justifycenter', 'justifyright', 'justifyfull', 'separator', 'orderedlist', 'unorderedlist', 'outdent', 'indent', 'separator', 'forecolor', 'hilitecolor', 'textindicator', 'separator', 'inserthorizontalrule', 'createlink', 'insertimage', 'inserttable']]
Description	A list of options used by the HTMLEditorToolbar. This is used within rich text fields.

2.11 I

- IAPICommunicationMode

Section	DataTransfer.Legacy
Value	ForceKepler
Description	Default communication mode for import, DataTransfer.Legacy.

- IgnoreCertificateErrors

Section	Relativity.Authentication
Value	False
Description	Determines whether Relativity must validate the chain of trust of certificates when running over HTTPs. Setting the value to True is a security vulnerability and should only be done in testing environments. Recommended value is False.
Recommended security value	False - it is not secure to ignore certificate errors in Relativity.

- ImageExportThreshold

Section	Relativity.Core
Value	300
Description	The amount of time, in seconds, that the TIFNative manager waits for a single document to export before canceling the imaging export process and moving to the next document.

- ImageOnTheFlyJobPriorityDefault

Section	Relativity.Core
Value	1
Description	The default priority for all image-on-the-fly jobs.

- ImageViewerBufferSize

Section	kCura.EDDS.Web
Value	10485760
Description	Determines the maximum number of bytes that the Image Viewer will preload into memory.

- ImageViewerContinuousPagingThreshold

Section	kCura.EDDS.Web
Value	500
Description	Determines the maximum number of pages to view continuously in the Image Viewer before switching to Single Paging Mode.

- ImagingBatchSize

Section	Relativity.Imaging
Value	500
Description	Determines the maximum number of documents to submit for imaging at a time.

- ImagingBatchSubmitMaxRetries

Section	Relativity.Conversion
Value	3
Description	The maximum number of times a user can retry each batch of documents for conversion.

- ImagingJobCleanupInterval

Section	Relativity.Conversion
Value	1440 60
Description	The amount of time, in minutes, between attempts to clean up stalled imaging jobs. The default is 1440 minutes, which is 24 hours.

- ImagingJobPriorityDefault

Section	Relativity.Core
Value	100
Description	Determines the default priority for all Imaging jobs, excluding image-on-the-fly jobs.

- ImagingRequestTimeout

Section	Relativity.Conversion
Value	1
Description	The amount of time, in minutes, the system waits before checking an imaging request made to Invariant. The default is 1 minute.

- IngestionTemporaryFileCacheLocation

Section	Relativity.DataGrid
Value	<<default relativity file share>>/datagrid
Description	The location on disk where Relativity writes temporary files while ingesting documents into Data Grid.

- InitialNumberOfViewableDocuments

Section	Relativity.Core
Value	1000
Description	Determines the initial number of viewable items on list pages. It's the value in the First xxx drop-down menu on the bottom of various list pages.

- InMaintenanceMode

Section	Relativity.Authentication
Value	False
Description	Enables or disables maintenance mode. When you enable maintenance mode, Relativity only allows users in the System Administrators group to log in to the environment. If a user from another group attempts to log in, Relativity displays the following message on login page: Environment is in maintenance mode. You can also give access to specific groups in Relativity by updating the AllowMaintenanceModeAccessToGroups on page 11 instance setting. The InMaintenanceMode instance setting is not encrypted.

- Instance

Section	kCura.LicenseManager
Value	UNSETINSTANCE
Description	Controls the prefix for several columns in two Relativity scripts. In the Case User Rollup script, this value is the prefix for the Case User ID and Usage ID columns. In the Case Statistics Rollup script, this value is the name of the Instance column, as well as the prefix in the Usage ID, Case ID, and Name column. Changing this value immediately invalidates your Relativity and Processing license.

- InvariantApiKeplerPort

Section	Relativity.ApplicationBase
Value	8092
Description	The port on the Worker Manager Server that is hosting the Kepler Invariant API.

- InvariantApiWcfPort

Section	Relativity.ApplicationBase
Value	6859
Description	The port on the Worker Manager Server that is hosting the WCF Invariant API.

- InvariantFileDeletionServiceTimeout

Section	Relativity.Core
Value	300
Description	The amount of time, in seconds, that must elapse while Invariant returns no files for deletion before the Invariant File Deletion Kepler Service times out.

- InvariantDatabaseServerI

Section	kCura.ARM
Value	None
Description	Name of the primary Invariant SQL Server. For example, the SQL Server on which the Invariant database can be found.

- InvariantFileShare

Section	kCura.ARM
Value	None
Description	Indicates the BCPPath to be used for each Invariant SQL Server. If there are multiple Invariant SQL Servers in the environment, add one entry for each with the machine name set to the SQL Server name.

- InvariantQueueManagerServerDomain

Section	Relativity.ApplicationBase
Value	relativity.corp
Description	The domain name for Invariant's Queue Manager server. This instance setting is created by the Invariant Queue Manager, and used by Relativity when constructing the endpoint for Kepler calls to Invariant.

- InvitationEmailRequestBody

Section	Relativity.Authentication
Value	<HTML><BODY> <P>Your administrator has configured a Relativity account for you at the following URL: Log in to Relativity Click this link to access Relativity. You can also copy and paste the following text into your address bar: {LINKTEXT} If you were not expecting this e-mail, please contact your system administrator. Please do not reply to this email. </P></BODY></HTML>
Description	The Invitation Workflow request email message text. The email text must be formatted as HTML.

- InvitationEmailRequestFrom

Section	Relativity.Authentication
Value	PasswordReset@relativity.com
Description	The Invitation Workflow request email message sender.

- InvitationEmailRequestSubject

Section	Relativity.Authentication
Value	Welcome to Relativity
Description	The Invitation Workflow request email message subject.

- InvitationLinkLifetimeInMin

Section	Relativity.Authentication
Value	10080
Description	The number of minutes the link sent in the Invitation Email remains valid. <ul style="list-style-type: none"> ○ Determine how much time your organization is comfortable having links remain valid before sending a new email.
Recommended security value	<ul style="list-style-type: none"> ○ The longer the link remains viable, the more chance it could be compromised.

- IsOnlineInstance

Section	kCura.LicenseManager
Value	True
Description	Do not modify without advice from Relativity Customer Support. Indicates whether the Relativity instance is enabled to connect to the internet to automatically transmit system usage and billing data to Relativity ODA LLC.

- IsPerformanceEnabled

Section	Relativity.Core.Log
Value	10080
Description	Do not modify without advice from Relativity Customer Support. Determines whether Relativity logs performance metrics. Set this to True to log performance metrics.

- ItemListPreConvertCacheSize

Section	Relativity.Core
Value	10
Description	Determines the number of documents to convert, natives and images, sent for mass conversion when the Document list page loads. If value is set to 0 or lower, Item List pre-conversion will be disabled.

2.12 J

- JobCompleteHealthCheckMaxHours

Section	Relativity.Conversion.Cache
Value	72
Description	Defines the time period in which at least 1 clear conversion cache job per cache location resource server should have successfully completed. This is used by the job completed health check.

- JobCompleteHealthCheckUnsuccessfulJobsBeforeUnhealthy

Section	Relativity.Conversion.Cache
Value	5
Description	Defines the number of consecutive unsuccessful jobs allowed per cache location resource server before the application is considered unhealthy. This is used by the job completed health check.

2.13 K

■ KeplerServicesUri

Section	Relativity.Core
Value	http://localhost/Relativity.Rest/API/ Specifies the URL at which Relativity custom pages and event handlers can access the Services API Kepler services using API helpers. The URL must end in a forward slash.
Description	
Recommended security value	<p>Note: This instance setting must be manually added to your environment.</p> <ul style="list-style-type: none">◦ Change the link from http to https. For example, change <i>http://localhost/Relativity.Rest/API/</i> to <i>https://localhost/Relativity.Rest/API/</i>.◦ If EnforceHTTPS was set to True, this needs to be set to HTTPS instead of HTTP.

■ KeplerServicesUriForAgents

Section	Relativity.Core
Value	http://127.0.0.1:8990/Kepler Specifies the URL at which Relativity agents can access local Services API Kepler services using API helpers. The default port number, 8990, can be changed if there is a port conflict with some other server application.
Description	
Recommended security value	<ul style="list-style-type: none">◦ Change the link from http to https. For example, change <i>http://127.0.0.1:8990/Kepler</i> to <i>https://127.0.0.1:8990/Kepler</i>.◦ Set EnforceHTTPS to True if this value is set to HTTPS instead of HTTP.

■ KeyboardShortcutsDefault

Section	kCura.EDDS.Web
Value	True Controls the default value for enabling keyboard shortcuts for new users. If set to True, keyboard shortcuts are enabled for new users. If set to False, keyboard shortcuts are not enabled for new users.
Description	

2.14 L

■ LastAccessedBatchTimerInterval

Section	Relativity.Conversion
Value	10 seconds The amount of time, in seconds, between updates to the LastAccessed column on the ConvertedCacheFile table associated with the cache IDs for a group of converted documents. Relativity tracks the date and time when a user last converted the document to determine how long to store the document in the cache. To monitor these time intervals, it updates the information stored in this column by batches based on the
Description	

time interval set in this instance setting or on the number of records set in LastAccessedBatchRecordSizeLimit, depending on which limit is met first. For more information, see [LastAccessedBatchRecordSizeLimit](#).

You can increase the setting for this value and the LastAccessedBatchRecordSizeLimit if your SQL Server experiences a high number of requests for updates. This change causes the web server to retain more data in memory before sending a database request. Alternatively, you can decrease this setting if the web server is running out of memory because it is holding too many documents.

- LastAccessedBatchRecordSizeLimit

Section	Relativity.Conversion
Value	500
	Determines the maximum number of cache IDs added to a batch before Relativity updates the date and time information stored in the LastAccessed column on the ConvertedCacheFile table for these converted documents.
Description	You can increase the value for this instance setting and the LastAccessedBatchTimerInterval instance setting if your SQL Server experiences a high number of requests for updates. This change causes the web server to retain more data in memory before sending a database request. Alternatively, you can decrease this value if the web server is running out of memory because it's holding too many documents. For more information, see LastAccessedBatchTimerInterval .

- LdapTemplateUserID

Section	kCura.EDDS.Agents
Value	9
Description	Do not modify without advice from Relativity Customer Support. Identifies the Relativity User Id to use as a template when the LdapUserManager Agent creates users. This is used when integrating Relativity and Active Directory.

- LDFDirectory

Section	kCura.EDDS.SqlServer
Value	C:\Logs\
Description	Identifies the path to the log file directory that the SQL Server uses. This value should be relative to the server where SQL Server is installed.

- LegacyAuditCutoff

Section	kCura.EDDS.Web
Value	7/23/2008 3:16:57 PM
Description	Defines the date that the environment was upgraded to 4.20. It's used within messages explaining to the user that audit framework changed.

- LibraryApplicationPath

Section	kCura.EDDS.Procuro
Value	C:\Program Files\kCura Corporation\Relativity\Procuro\LibraryApplications\
Description	Identifies the root path where Procuro looks for Relativity Library Applications.

- LoadImportedFullTextFromServer

Section	Relativity.Data
Value	False
Description	Controls whether the Extracted Text field data loads directly from its file path during an import, rather than as part of a client-generated bulk load file. If set to True, the Extracted Text field loads directly from its file path. If set to False, the Extracted Text field loads a part of a client-generated bulk load file.

- LockoutNotificationList

Section	kCura.LicenseManager
Value	sales@relativity.com; Relativitystats@relativity.com
Description	Defines the distribution list for emails warning of a case statistics-based or license-based lockout.

- LogEntriesToken

Section	kCura.ARM
Value	None
Description	Token used to write to a log set in Logentries. This is obtained from Logentries in the settings view for a given log set.

- LoggingLevel

Section	Relativity.Core.Logging
Value	Information
Description	Do not modify without advice from Relativity Customer Support. Determines the Log Level for Relativity Application Logging. Possible values are Verbose, Debug, Information, Warning, Error, and Fatal.

- LoggingLevel

Section	kCura.ARM
Value	3
Description	Controls the logging level for ARM jobs. Possible values for this setting are: all messages (0), trace-level messages and above (1), debug messages (2), info messages (3), warnings (4), errors (5), fatal errors only (6), or no messages (7) The default is to log info messages and above.

- LoggingLocation

Section	Relativity.Core.Logging
Value	None
Description	Do not modify without advice from Relativity Customer Support. Identifies the location for Relativity Application Logging. Possible values are SQLServer, Data Grid, and None.

- LogOutLogo

Section	Relativity.Authentication
Value	relativityLogin.png

Description	Identifies the name of the image file used for the LogOut Page. This must be located within the Images folder.
-------------	--

- LongRunningTimeoutForPublish

Section	Relativity.Core
Value	1800
Description	The amount of time that you want to allow before a worker terminates an unresponsive publish job.

- LongRunningTimeoutForRetryPublish

Section	Relativity.Core
Value	5400
Description	The amount of time, in seconds, that you want to allow before a worker terminates an unresponsive publish retry job.

- LongRunningQueryTimeout

Section	kCura.Data.RowDataGateway
Value	6000
Description	The timeout value, in seconds, associated with long running queries. Various places in the system use this value to time out queries that may run for a significant length of time and potentially lock an associated table. The Production application uses this value throughout the branding and queuing of branding records processes.

- LongRunningCaseStatisticsQueryTimeout

Section	kCura.Billing
Value	600
Description	Sets a timeout, in seconds, for queries that run in the Case Statistics Manager. If not set or non numeric, the value defaults to 600. A value of 0 is an infinite timeout. If the billing report queries consistently fail, and there are SQL timeout errors in the log, increase the timeout value.

2.15 M

- MassActionUpgradeBatchAmount

Section	kCura.EDDS.Web
Value	1000
Description	Determines the number of workspaces per batch when you run an Edit Priority, Retry Upgrade, or Cancel Upgrade mass operation on the Workspace Upgrade queue.

- MassCleanseBatchAmount

Section	kCura.EDDS.Web
Value	1000
Description	Determines the number of documents per batch for the mass cleanse process.

- MassCopyBatchAmount

Section	kCura.EDDS.Web
Value	100
Description	Determines the number of objects per batch when copying Dynamic Objects. Defaults to the current value for the MassDeleteBatchAmount instance setting.

- MassCreateBatchSize

Section	kCura.Relativity
Value	500
Description	Determines the number of artifacts per batch for the mass create process of the Services API. The Production application uses this value to determine the number of documents per batch of ProductionInformation RDOs to mass create during staging.

- MassCreateWordIndexBatchAmount

Section	kCura.EDDS.Web
Value	1000
Description	Determines the number of documents per batch for the mass create word index process.

- MassCustomBatchAmount

Section	kCura.EDDS.Web
Value	1000
Description	Determines the number of items per batch for custom mass operations. This value controls the batch size for all custom mass operations. If set to 0, Relativity skips batch execution.

- MassDeleteBatchAmount

Section	kCura.EDDS.Web
Value	100
Description	Determines the number of documents per batch for the mass delete process. The Production application uses this value to determine the number of documents per batch of ProductionInformation RDOs to mass delete during staging.

- MassDeleteBatchAmount

Section	kCura.Relativity
Value	100
Description	Determines the number of documents per batch for the mass delete process. The Relativity Services API (RSAPI) does not currently support the mass delete operation. This means that the RSAPI always performs a deletion one artifact at a time, regardless of the value for the MassDeleteBatchAmount instance setting value in the kCura.Relativity section of the table.

- MassEditBatchAmount

Section	kCura.EDDS.Web
Value	1000
Description	Determines the number of documents per batch for the mass edit process. In pro-

cessing, this is the number of errors that will be marked as ignored or will be put into retry tables at a time. The Production application uses this value to determine the number of documents per batch of ProductionInformation RDOs to mass edit during staging.

- **MassExportBatchAmount**

Section	kCura.EDDS.Web
Value	100000
Description	Determines the number of documents per batch for the mass export process.

- **MassImageBatchAmount**

Section	kCura.EDDS.Web
Value	1000
Description	The number of documents per batch for the mass image process.

- **MassImportSqlTimeout**

Section	Relativity.Data
Value	60
Description	The timeout value, in seconds, associated with long running queries that any form of mass import runs. This includes image and native.

- **MassMoveBatchAmount**

Section	kCura.EDDS.Web
Value	1000
Description	Determines the number of documents per batch for the mass move process.

- **MassOperationManagerThreadCount**

Section	Relativity.MassOperations
Value	0
Description	Max number of threads for each Mass Operation Manager. If 0 or less, defaults to Agent server processor count * 2.

- **MassProcessTranscriptBatchAmount**

Section	kCura.EDDS.Web
Value	1000
Description	Determines the number of documents per batch for the mass transcript process.

- **MassProduceBatchAmount**

Section	kCura.EDDS.Web
Value	1000
Description	Determines the number of documents per batch for the mass produce process.

- **MassSaveAsPDFJobPriorityDefault**

Section	Relativity.Core
Value	100

Description	The default priority for all Mass Save as PDF jobs, as displayed on the worker manager server.
-------------	--

- **MaximumFileSize**

Section	Relativity.Core
Value	1048576000
Description	Determines the maximum allowed file size, in bytes, that users are allowed to upload to the file fields. If the value is 0, file size will not be validated.

- **MaximumAdditionalWorkFactorRestriction**

Section	Relativity.Authentication
Value	3
Description	Sets the maximum additional work factor that can be selected for the Password Provider on the Authentication Provider Settings section of the Authentication Provider tab.
Recommended security value	<ul style="list-style-type: none"> ○ Use the default setting unless your organization decides more hashing is necessary. ○ More hashing means better encryption, but increasing this value should be tested prior to making the change in Production as it could significantly increase login time.

- **MaxAggregatedWorkspaces**

Section	kCura.Audit
Value	10
Description	Sets the maximum number of workspaces aggregated when audit from multiple workspaces are accessed.

- **MaxAnalyticsIndexIdleDays**

Section	kCura.EDDS.Agents
Value	15
Description	Determines the number of days that an Analytics Index can remain idle before the case manager agent automatically disables it.

- **MaxArtifactBatchSizeForExecuteBatch**

Section	kCura.Relativity
Value	2000
Description	Determines the maximum number of artifacts that can be submitted to ExecuteBatch in one batch.

- **MaxColumnsForMinWidth**

Section	kCura.EDDS.Web
Value	20
Description	The number of columns in a view that fit your display. If the number of columns in your view exceed this number, Relativity pushes those columns to a scroll view. The system

will make optimizations that drastically reduce lag time when working with large views. However, this may result in a suboptimal user experience on views with fewer columns. Reduce this number if users complain that their views are lagging.

- **MaxConcurrentAnalysisJobs**

Section	Relativity.StructuredAnalytics
Value	3
Description	The maximum number of concurrent structured analytics jobs in the analysis phase. We recommend 3. We do not recommend using 0, which indicates unlimited concurrent jobs.

- **MaxConcurrentExportJobs**

Section	Relativity.StructuredAnalytics
Value	3
Description	The maximum number of concurrent structured analytics jobs in the export phase. We recommend 3. We do not recommend using 0, which indicates unlimited concurrent jobs.

- **MaxConcurrentImportJobs**

Section	Relativity.StructuredAnalytics
Value	5
Description	The maximum number of concurrent structured analytics jobs in the import phase. We recommend 5. We do not recommend using 0, which indicates unlimited concurrent jobs.

- **MaxConcurrentWorkspaceUpgradesPerApplicationInstallerAgent**

Section	Relativity.Core
Value	3
Description	Reserved for future development.

- **MaxErrorListItems**

Section	Relativity.Data
Value	50000
Description	Determines the maximum number of errors that appear on the Error page.

- **MaxFilesPerCacheFolder**

Section	Relativity.Conversion
Value	1000
Description	Determines the maximum number of files to store in a single cache folder.

- **MaxGridItemsToExport**

Section	kCura.Audit
Value	5000
Description	Maximum number of audits that can be exported from Data Grid.

- **MaxJobExpirationHours**

Section	kCura.Fta
Value	168
Description	The maximum period of time, in hours, before a file transfer job expires.

- MaxJobRetryCount

Section	kCura.Fta
Value	3
Description	The maximum number of times a job is retried before the file transfer job status sets to Error.

- MaxKeplerRetryCount

Section	kCura.Fta
Value	5
Description	The maximum number of times a Kepler service call is made from a file transfer job before throwing an exception.

- MaximumActionsAllowedForRelativityScript

Section	kCura.EDDS.Web
Value	10
Description	Determines the maximum number of actions that can be included in the script body for Relativity scripts; 10 is the recommended value.

- MaximumColumnsAllowedForRelativityScriptReport

Section	kCura.EDDS.Web
Value	7
Description	Determines the maximum number of columns that can render when a Relativity script runs as a report; 7 is the recommended value.

- MaximumDisplayCountForMultiPicker

Section	kCura.EDDS.Web
Value	10
Description	Determines the maximum number of items to display while editing multi-object and multi-choice fields. Once items exceed this value, a button with "..." replaces the drop-down list.

- MaximumImageCountForViewer

Section	kCura.EDDS.Web
Value	1000
Description	Determines the maximum number of images in a document for the document to appear in the viewer. Documents that contain more images than this value are not converted and will not appear in the viewer.

- MaxImagingResponseThreads

Section	Relativity.Imaging
Value	0

Description	The maximum number of threads for each Imaging Response Agent. If this is 0 or less, defaults to Agent server processor count * 2. Our recommendation is 1 Imaging Response Agent thread per 8 Imaging Worker threads at a minimum.
-------------	---

- **MaxImagingRequestThreads**

Section	Relativity.Imaging
Value	0
Description	The maximum number of threads for each Imaging Request Agent. If this is 0 or less, defaults to Agent server processor count * 2. Our recommendation is 1 Imaging Request Agent thread per 8 Imaging Worker threads at a minimum.

- **MaximumListPageTextLength**

Section	kCura.EDDS.Web
Value	500
Description	Determines the maximum number of characters that the item list displays for a text field.

- **MaximumLongTextSizeForExportInCell**

Section	kCura.EDDS.WebAPI
Value	1048576
Description	The maximum length, in characters, of a long-text cell. During export, if the length of a long-text cell is greater than this value, Relativity pulls down a token instead of the text for that cell. When the Desktop Client comes across that cell, it knows to make a separate call to pull down the text for that cell.

- **MaximumNativeFileSizeForViewerForMediaFilesinMegabytes**

Section	kCura.EDDS.Web
Value	1024
Description	The maximum size, in megabytes, of a native media file that the Native Viewer attempts to display. If a native media document is greater than this size, the user sees a page explaining that the document is too large to be displayed.

- **MaximumNativeSizeForViewerInBytes**

Section	kCura.EDDS.Web
Value	10485760
Description	The maximum size, in bytes, of a native file that the Native Viewer attempts to display. If a native document is greater than this size, the user sees a page explaining that the document is too large to be displayed.

- **MaximumNumberOfCharactersSupportedByLongText**

Section	kCura.EDDS.Web
Value	100000
Description	Determines the maximum number of characters, including HTML markup, that can be saved into a long text field from the web.

- **MaximumNumberOfImagesForExportChunk**

Section	kCura.EDDS.WebAPI
Value	10000
Description	The maximum number of images, in total bytes, that export in a single set.

■ **MaximumPasswordAgeDefault**

Section	kCura.EDDS.Web
Value	0
Description	Determines the default value for the maximum password age when creating password authentication providers. <ul style="list-style-type: none"> ○ Set this value to a number greater than zero so users are encouraged to change their passwords after a certain number of days.
Recommended security value	<ul style="list-style-type: none"> ○ Password rotation can protect Relativity against passwords that may have been compromised.

■ **MaximumPasswordLength**

Section	kCura.EDDS.Web
Value	50
Description	Determines the maximum number of characters required for a user password. This value cannot be greater than 50.

■ **MaximumPasswordLengthDefault**

Section	Relativity.Authentication
Value	50
Description	Sets the default value for the MaximumPasswordLength setting in the Password Provider on the Authentication Provider Settings section of the Authentication Provider tab.

■ **MaximumPasswordLengthRestriction**

Section	Relativity.Authentication
Value	50
Description	Sets maximum length for a PasswordLength setting in the Password Provider on the Authentication Provider Settings section of the Authentication Provider tab.

■ **MaximumTextVolumeForExportChunk**

Section	kCura.EDDS.WebAPI
Value	268435456
Description	Determines the maximum total text size, in bytes, that can be exported from a single chunked WebAPI payload. Although the long text length is accounted for within the chunk total, the long text data is retrieved through a separate API.

■ **MaximumInvalidLoginAttemptsDefault**

Section	Relativity.Authentication
Value	10
Description	Determines the maximum number of login attempts a user can make with a given username before Relativity locks that username.

- MaxListItems

Section	Relativity.Data
Value	1000
Description	Determines the maximum number of items that appear on the dtSearch/CA error pop-ups, the batch, linked, search, and relational panes within the review tool, and the error list at Home.

- MaxNumberDashboardWidgets

Section	kCura.Core
Value	10
Description	Determines the maximum number of widgets that a user can add to a given dashboard.. Add Pivot button is grayed out if amount of Pivot widgets in current dashboard is greater than or equal to set value.

- MaxNumberOfArtifactsToMassCreate

Section	kCura.Relativity
Value	1000000
Description	Determines the maximum number of artifacts that a user can submit to the MassCreate API function at a time.

- MaxNumberOfArtifactsToMassEdit

Section	kCura.Relativity
Value	1000000
Description	Determines the maximum number of artifacts that a user can submit to the MassEdit API function at a time.

- MaxNumDocumentsSaveAsPDF

Section	Relativity.Core
Value	500000
Description	Determines the maximum number of documents added to a Save As PDF job. Increasing this value may result in UI performance issues or failed Save As PDF jobs.

- MaxNumPagesSaveAsPDF

Section	Relativity.Core
Value	25000
Description	Determines the maximum number of images allowed in one Save As PDF request.

- MaximumPasswordHistory

Section	Relativity.Core
Value	5
Description	Determines how many password changes Relativity examines for duplicate passwords. Setting this to a large value could prevent a user from ever using the same password twice.
Recommended security value	<ul style="list-style-type: none"> ○ Determine if your organization wants to limit users from reusing the same passwords they have used in the past.

- This can protect the Relativity environment from a previously compromised password.

- **MaximumPasswordHistoryRestriction**

Section	Relativity.Authentication
Value	5
Description	Sets maximum value for the MaximumPasswordHistory setting in the Authentication Provider Settings section of the Authentication Provider tab. Lower values allow users to repeat passwords more frequently. Zero does not keep any password history. Higher values restrict passwords for being used again soon.

- **MaxPDVQueryLength**

Section	Relativity.Core
Value	60
Description	The amount of time, in seconds, before running queries related to displaying document lists time out.

- **MaxQueryConditionCharacterLength**

Section	Relativity.Core
Value	100000
Description	Determines the maximum number of characters of criterion in the View criteria picker.

- **MaxTreeviewChildNodes**

Section	Relativity.Core
Value	1000
Description	Determines the maximum number of nodes under a single parent node that appears in the tree view. If the number of child nodes is exceeded, an error message appears. This improves user experience and avoids memory issues within the browser.

- **MigrationAgentBatchSize**

Section	Relativity.DataGrid.Migration
Value	500
Description	Default size of batches for migration

- **MigrationFailOnFileCopyErrors**

Section	Relativity.ApplicationBase
Value	True
Description	Determines if a Processing Migration job, Archive or Restore, will stop and fail the job if there is a file copy error, when the setting is set to true, or will log a report of the failed file copies, when false.

- **MemoryByteSizeThreshold**

Section	Relativity.DataGridMigrator.Agent
Value	104857600
Description	Maximum size that Data Grid Text Migrator agent will attempt load documents in memory. The default value is 104857600 (100MB).

- MetricsTransmissionBasedLockout

Section	kCura.LicenseManager
Value	blank
Description	Stores an encrypted value with the last time a metric was successfully transmitted to Relativity ODA LLC.

- MigrationMaxParallelFileCopyThreads

Section	Relativity.DataTransfer
Value	4
Description	The maximum number of parallel threads ARM for Processing will use during the file repository copy operation.

- MinimumExcerptTextLength

Section	kCura.AssistedReview
Value	120
Description	Determines the minimum number of characters required for a text excerpt for designation and issues.

- MinimumPasswordLength

Section	kCura.EDDS.Web
Value	8
Description	Determines the minimum number of characters required for a user password. This instance setting can be set to a value between 8-50.

- MinimumPasswordLengthDefault

Section	Relativity.Authentication
Value	10
Description	The default value for the MinimumPasswordLength setting in the Authentication Provider Settings section of the Authentication Provider tab.

- MinimumPasswordLengthRestriction

Section	Relativity.Authentication
Value	8
Description	Sets minimum length for a PasswordLength setting in the Authentication Provider Settings section of the Authentication Provider tab.

- MinimumSeedInfluence

Section	kCura.AssistedReview
Value	25
Description	The minimum number of documents required to be categorized by each example document returned in an Assisted Review stratified sample. This is only available if you add it locally.

- MinimumSupportedChromeVersion

Section	Relativity.Authentication
---------	---------------------------

Value	35
Description	Do not modify without advice from Relativity Customer Support. This instance setting lists the minimum version of Chrome that is compatible with Relativity.

- MinimumSupportedFirefoxVersion

Section	Relativity.Authentication
Value	31
Description	Do not modify without advice from Relativity Customer Support. This instance setting lists the minimum version of Firefox that is compatible with Relativity.

- MinimumSupportedSafariVersion

Section	Relativity.Authentication
Value	6
Description	Do not modify without advice from Relativity Customer Support. This instance setting lists the minimum version of Safari that is compatible with Relativity.

- MinimumSupportedVersion

Section	Relativity.Authentication
Value	10
Description	Do not modify without advice from Relativity Customer Support. This instance setting lists the minimum version of Internet Explorer that is compatible with Relativity.

- MissedServerCheckInsBeforeAlert

Section	Relativity.Core
Value	3
Description	Determines the number of times that a server can fail to check in with Relativity before the application generates an alert indicating that the server is non-responsive. The ServerCheckInInterval instance setting specifies the time interval indicating how frequently the server must check in with Relativity. See ServerCheckInInterval.

- MOTDTextOnly

Section	kCura.EDDS.Web
Value	False
Description	Controls how the message of the day (MOTD) is entered and displayed. If set to True, the MOTD can only be entered and displayed as plain text. If set to False, the MOTD can be entered and displayed using the full HTML editor.
	<hr/> <p>Note: This instance setting must be manually added to your environment.</p> <hr/>
Recommended security value	<ul style="list-style-type: none"> ◦ Set the value to True unless you want the ability to use JavaScript in this field. ◦ By only allowing text in the Message of the Day box, cross-site scripting and cross-frame scripting can be prevented.

2.16 N

- NativeImagingTimeout

Section	Relativity.Imaging
Value	300
Value Type	Nonnegative Integer 32-bit
Description	The amount of time, in seconds, that the native imaging process waits for a single document to be imaged before killing the export process and moving to the next document. Note: This timeout is not valid for .cad, .pdf, .txt, .rtf, .nsf, .hwp, .jungum, .bitmap, and .xps files. .cad has its own timeout, and the other files use global Invariant timeout.

- NumberOfDocumentsToAutoPreConvert

Section	Relativity.DocumentViewer
Value	1000
Description	Determines the number of documents, natives and images, to preconvert upon batch checkout and defaults to 1000. If value is set to 0, preconversion will be disabled.

- NumberOfRelatedDocumentsToPreconvert

Section	Relativity.DocumentViewer
Value	25
Description	Determines the number of documents, up to a maximum of 25, to automatically preconvert for the Relational List Pane in the document viewer coding panel. Converts both Natives and Images.

2.17 O

- OCRCompilationBatchSize

Section	kCura.EDDS.Agents
Value	100
Description	Determines the number of updates to the document table, with the OCRred text, that the OCR Manager makes in a single transaction.

- OCRProcessingBatchSize

Section	kCura.EDDS.Agents
Value	1000
Description	Determines the number of items transferred from OCR_POP tables into OCR_TEXT in a single transaction.

- OCRWorkerBatchAmount

Section	kCura.EDDS.Agents
Value	100

Description	Determines the number of images a single OCR worker agent pulls and OCRs at a time.
-------------	---

- OCRWorkerInsertBatchSize

Section	kCura.EDDS.Agents
Value	500
Description	Determines the number of inserts to the OCR Worker table that the OCR Manager agent batches into a single transaction.

- OIDateFormat

Section	Relativity.Conversion
Value	blank
Description	Determines the date format used during native file conversion. Accepted values are MM/DD/YYYY, MM/DD/YY, DD/MM/YYYY, DD/MM/YY, YYYY/MM/DD, YY/MM/DD.

- OutputStructure

Section	Relativity.Conversion
Value	Chunked
Description	<p>Determine the data transfer encoding method that Relativity's processing engine uses when converting files into documents that are readable in the viewer. The method can be chunked or streamed. By default, this value is set to Chunked.</p> <ul style="list-style-type: none"> ○ Chunked—Relativity transfers data to the processing engine in a series of chunks. The size of each chunk is sent directly before the chunk itself so that the engine knows when it has finished receiving data for that chunk. Chunked is the default value. Chunked and Flat get similar conversion results. ○ Streamed—Relativity transfers data to the processing engine in a steady and continuous stream. If the engine receives the data more quickly than required, it temporarily saves the excess data in a buffer until it's ready to process it. Do not select Streamed. If you select Streamed, you will experience conversion failures.

- OutputUrlPath

Section	Relativity.Conversion
Value	./
Description	Identifies the relative path to any other resources needed by a converted document. The default value is ./.

- OversizedAuditsFolder

Section	kCura.Audit
Value	DataGridOversizedAudits
Description	The subfolder that stores oversized audits.

2.18 P

- ParameterLoggingMaxLength

Section	kCura.Data.RowDataGateway
Value	8000
Description	Sets the maximum length of strings in the messages logged at Verbose logging level by System DataLayer.

- PasswordHistoryDefault

Section	Relativity.Authentication
Value	5
Description	Sets default value for the PasswordHistory setting in the Authentication Provider Settings section of the Authentication Provider tab.

- PasswordNotificationRelativityURL

Section	kCura.Relativity
Value	blank
Description	Identifies the URL for Relativity used in a password notification email. It's used only by the API.

- PasswordResetEmailExpirationInMinutes

Section	Relativity.ForgotPassword
Value	15
Description	<p>Defines how long, in minutes, password reset links remain valid after the email is sent.</p> <p>Changing this instance setting affects all subsequent reset password links, after about 30 seconds. It does not affect the links that have already been sent.</p>
Recommended security value	<ul style="list-style-type: none"> ○ Your organization should limit the time the password reset link remains valid. ○ The longer the link remains active, the more risk it will be compromised by an attacker.

- PasswordResetRequestLimitDefault

Section	Relativity.Authentication
Value	10
Description	Sets the default value for the PasswordResetRequestLimit setting in the Authentication Provider Settings section of the Authentication Provider tab.

- PasswordResetRequestLimit

Section	Relativity.Authentication
Value	10
Description	<p>Determines the number of password reset requests, between 10-50 requests, an individual email address can generate. After reaching this number, the email address cannot receive any additional Reset Password emails unless the user clicks the link provided in the email. After the Case Manager agent runs again, the Reset Password emails resume. Until the Case Manager agent runs, no auditing is logged for the user.</p>

- PDVCacheLifetime

Section	kCura.Relativity
Value	1000
Description	The amount of time, in minutes, the Performance DataView cache exists. Relativity uses this cache for item list population to increase performance.

- PDVDefaultQueryCacheSize

Section	kCura.Relativity
Value	10000
Description	Determines the default number of artifacts returned during each query cache read.

- PlaceholderImageFormatDefault

Section	Relativity.Production
Value	TIFF
Description	The default placeholder image format that gets applied to new productions. You can set the PlaceholderImageFormatDefault to either TIFF or JPEG. When creating a new production, you can override the default image placeholder format without changing the instance setting.

- PivotMaximumNumberOfColumns

Section	Relativity.Data
Value	100
Description	Determines the maximum number of columns that appear in pivot.

- PivotMaximumNumberOfRows

Section	Relativity.Data
Value	20000
Description	Determines the maximum number of rows that appear in pivot.

- PivotNumberOfRowsPerPage

Section	kCura.EDDS.Web
Value	15
Description	Determines the default number of rows per page in pivot.

- PivotQueryTimeout

Section	Relativity.Data
Value	180
Description	The timeout value, in seconds, on the pivot query.

- PostLibraryScriptUrls

Section	Relativity.Conversion
Value	blank
Description	A semicolon-delimited list of JavaScript libraries to load after loading Oracle libraries in every converted document. By default, this value is empty.

- PostMigrationPersistencePeriod

Section	kCura.Audit
Value	90
Description	The amount of time, in days, that audit data remains in SQL after it has been created.

- PreConvertCacheSize

Section	kCura.EDDS.Web
Value	3
Description	Determines how many documents are pre-converted when the user reviews them in the Review Interface. Pre-conversion occurs for the Native, Image, and Production Viewers.

- PreLibraryScriptUrls

Section	Relativity.Conversion
Value	blank
Description	A semicolon-delimited list of JavaScript libraries to load before loading Oracle libraries in every converted document. By default, this value is empty.

- PreventLoginLinkDisplayOnLogoutPage

Section	Relativity.Authentication
Value	FALSE
Description	Controls the display of the login link on the logout page. If you set the value to false, then the login link appears on the logout page. If you set the value to true, the link does not appear on this page. Set the value to true if you want to prevent users who authenticate with SAML or OpenID Connect from experiencing any confusion caused by seeing the login link displayed when they are logging out of Relativity.

- PrintImageWarningThreshold

Section	kCura.EDDS.Web
Value	500
Description	Determines the maximum number of images that a user can mass print before a warning message appears. If a user attempts to mass print, and the number of images to be printed exceeds this threshold, a warning appears to let the user know they're attempting to print a large number of documents.

- ProcessingDiscoverJobPriorityDefault

Section	Relativity.Core
Value	100
Description	Determines the default priority for all Processing Discover jobs.

- ProcessingErrorRetrievalInitialBatchSize

Section	Relativity.Core
Value	1000
Description	Determines the initial number of errors to pull back from the worker manager server in one call. If this fails, the number is halved until it either succeeds or fails in pulling back one error.

- ProcessingErrorUpdateBatchSize

Section	Relativity.Core
Value	1000
Description	Determines the number of errors per batch that the processing set manager agent retrieves and sends back to Relativity to display in the Errors tab. If this value is set to a number higher than 1000 and you attempt to republish a processing set that contains 1000 or more publish errors, you will receive an agent error. Retrying errors manually on the Errors tab is not affected by this issue.

- ProcessingExportBatchSize

Section	Relativity.Core
Value	4000
Description	Determines the number of documents per batch when importing documents during processing.

- ProcessingInventoryJobPriorityDefault

Section	Relativity.Core
Value	100
Description	Determines the default priority for all Processing Inventory jobs.

- ProcessingMaxPublishJobCountPerRelativitySQLServer

Section	Relativity.Core
Value	21
Description	The maximum number of publish jobs per Relativity SQL server that may be worked on in parallel. This puts an absolute limit on the number of publish jobs that occur in parallel for a given SQL server, independent of how many workspaces may be publishing simultaneously. This means that it overrides the limit set by ProcessingMaxPublishSubJobCountPerWorkspace. For information on configuring this setting, see the Processing User Guide.

- ProcessingMaxPublishSubJobCountPerWorkspace

Section	Relativity.Core
Value	7
Description	The maximum number of publish jobs per workspace that may be worked on in parallel. You cannot allocate more jobs per workspace than what is allowed per SQL server. This means that if this value is set to be higher than the value for the MaxPublishJobCountPerRelativitySQLServer instance setting, then Relativity only allows the maximum of jobs per SQL server. For information on configuring this setting, see the Processing User Guide.

- ProcessingPublishJobPriorityDefault

Section	Relativity.Core
Value	90
Description	Determines the default priority for all Processing Publish jobs.

- ProcessingRetryCount

Section	Relativity.Core
Value	3
Description	Determines the number of times Relativity retries a processing job before flagging the job as paused.

- ProcessingRetryTimerDuration

Section	Relativity.Core
Value	600
Description	The amount of time, in seconds, before the Processing Set Manager automatically retries paused jobs.

- ProcessingSetStatusUpdateInterval

Section	Relativity.Core
Value	5000
Description	The interval, in milliseconds, at which the processing set console updates the status of the processing set.

- ProcessingStatisticsMaxNumberOfRows

Section	Relativity.Core
Value	1300
Description	Determines the maximum number of rows that the Processing Statistics event handler can return. Each row contains a processing set.

- ProcessingWebAPIPath

Section	Relativity.Core
Value	<blank>
	Identifies the URL that directs to the Relativity token-authenticated endpoints that Invariant uses to process files. Processing requires this URL and a Relativity admin must enter it. Beginning in Relativity 9.3, this setting can no longer be a Windows Authenticated Relativity Web API endpoint; it must use token authentication.
Description	Note: Beginning in Relativity 9.3, Relativity WebAPI uses an updated authentication model. When you upgrade to Relativity 9.3, update your IIS settings by changing the WebAPI to Anonymous Authentication rather than Windows Authentication. You must update this setting to Anonymous Authentication to publish documents to a workspace or process data to Data Grid.

- ProtectedAssemblies

Section	Relativity.Core
Value	kCur-a.Relativity.Client.dll;kCur-a.Relativity.Client40.dll;kCura.EventHandler.dll;Relativity.CustomPages.dll;kCura.Agent.dll
Description	A semicolon-delimited string of common DLLs to not write out from the Assembly table

tion when loading Event Handlers, Custom Pages, or Agents.

2.19 Q

■ QueryCacheMode

Section	Relativity.Core
Value	SQLDependency
Description	Determines the type of SQL caching that Relativity users use. Set this to SQLDependency to use SQL Service Broker or to TimeBased to cache data in the SQL cache for 30 seconds. The preferred value is SQLDependency, as this option notifies the web server in the event SQL Data updates. Because the TimeBased option caches SQL data for 30 seconds, the web server's data may be briefly outdated. You can also enter a value of None, but doing so results in no SQL caching and denies those performance increases that either of the above values allow. Because of this, we recommend you do not enter None.

■ QuickNavEnabled

Section	Relativity.Core
Value	True
Description	Controls if the quick nav search box appears. If set to True, the quick nav search box appears. If set to False, the quick nav search box does not appear.

■ QuickNavMaxResults

Section	Relativity.Core
Value	20
Description	Determines the maximum number of results that appear in quick nav. The value must be a number between 2 and 50.

2.20 R

■ RecentHistoryEnabled

Section	Relativity.Core
Value	TRUE
Description	Controls if recent history items appear. If set to True, recent history items appear. If set to False, recent history items do not appear.

■ RecentHistoryNumberOfItemsDisplayed

Section	Relativity.Core
Value	10
Description	Determines the number of recent history items that the favorites control stores and displays if Recent History is enabled.

■ RedactionBatchSize

Section	Relativity.Production
Value	25000
Description	Controls how the Branding Manager retrieves redactions

- RelativityInstanceURL

Section	Relativity.Core
Value	Blank string ("")
Description	Identifies the URL that your Relativity instance uses. For example, you might use <i>https://Relativity.corp/Relativity</i> as the instance URL for your environment. Any Relativity applications deployed in your environment that need to provide external links to users can use this instance setting. For example, any application that adds a link to a Relativity application in an email message could use this setting. Do not use <i>localhost</i> as the host name in this instance setting.

- RelativityInternalWebUri

Section	Relativity.Core
Value	Blank string ("")
Description	A URL that overrides the dynamically-generated internal URL for the Relativity application, for example, <i>http://localhost/Relativity</i> . This value should be set when the web server has multiple HTTP bindings, for example, for a specific TLS/SSL setup.

- RelativityMinimumVersion

Section	Relativity.Conversion.Cache
Value	12.1.0.0
Description	The minimum Relativity version required to install the Relativity Conversion Cache application.

- RelativityScriptPickerViewID

Section	kCura.EDDS.Web
Value	902
Description	Identifies the View ArtifactID of the Relativity Script Picker.

- RelativityServicesPath

Section	Relativity.Core
Value	Set during Relativity installation
Description	Identifies the URL for the Services API. Event handlers and custom agents use this path. Procuro automatically sets this value on installation.

- RelativityWebAPITimeout

Section	kCura.ARM
Value	300,000
Description	The timeout for Relativity WebAPI calls made by ARM in milliseconds.

- ReplaceApplicationNameWithArtifactID

Section	kCura.Billing
---------	---------------

Value	True
Description	Controls if the Application Name in the billing statistics report is replaced with the Application ArtifactID. If set to True, the Application Name in the billing statistics scripts is replaced with the Application ArtifactID. By default, the value is set to False, and the Application Name is displayed.
Recommended security value	False - the application name could reveal sensitive information.

- ReplaceCaseNameWithArtifactID

Section	kCura.Billing
Value	False
Description	Controls whether the Case Name in the billing statistics report is replaced with the Case ArtifactID. If set to True, the Case Name in the billing statistics scripts is replaced with the Application ArtifactID. By default, the value is set to False, and the Case Name is displayed.
Recommended security value	False - the case name could reveal sensitive information.

- ReplaceClientNameWithHashValue

Section	kCura.Billing
Value	False
Description	Controls whether Relativity replaces the client name in billing information, sent manually or automatically through the SMTP server. If set to True, Relativity replaces the client name with a unique hash value. Domains remain unencrypted. If set to False, entire user email addresses appear. If you manually run the billing script, the value you select in the interface overrides this instance setting.

- ReplaceMatterNameWithHashValue

Section	kCura.Billing
Value	False
Description	Controls whether Relativity replaces the matter name in billing information, sent manually or automatically through the SMTP server. If set to True, Relativity replaces the client name with a unique hash value. Domains remain unencrypted. If set to False, entire user email addresses appear. If you manually run the billing script, the value you select in the interface overrides this instance setting.

- ReplaceUserNameWithHashValue

Section	kCura.Billing
Value	False
Description	Controls whether Relativity replaces the username portions of user email addresses with hash values in billing information sent manually or sent automatically through the SMTP server. If set to True, Relativity replaces all text preceding the @ symbol in each user email address with a unique hash value. Domains remain unencrypted. If set to False, entire user email addresses appear. If you manually run the billing script, the value you select in the interface overrides

this instance setting.
 Recommended security value SMTP server - this will hide the usernames and case names in Billing Data sent through the SMTP server.

- **ReplaceWebAPIWithExportCore**

Section	kCura.IntegrationPoints
Value	True
Description	Determines if the Integration Points Fileshare destination provider, Relativity Export, will use the Export Core, direct usage of Relativity.Core, instead of /RelativityWebAPI web service calls. If you keep this at the default value of True, then Integration Points Export will use the Export Core. If you change this value to False, then Integration Points Export will use the Relativity WebAPI. This setting was added in Relativity 9.4.321.2.

- **RepositoryVolumeMax**

Section	Relativity.Core
Value	1000
Description	Determines the maximum number of files allowed in a repository case sub-directory. The Production application uses this value when creating images during branding to determine whether to create a new folder.

- **RerunBrandingErrorsThreshold**

Section	Relativity.Production
Value	1
Description	The maximum percentage of documents that errored during a branding job that the system will automatically retry upon the job's completion. If more than the maximum percentage of documents receive an error, the system will not retry any of the documents.

- **ResourceUrlPath**

Section	Relativity.Conversion
Value	/Relativity/CustomPages/{viewer application guid}/OracleContent/{version}/
Description	Identifies the relative path to Oracle resources for converted documents. In the default value, replace {viewer application guid} with your guid without the curly braces.

- **RestrictedFileTypes**

Section	Relativity.Core
Value	.exe;.html;.htm;.js
Description	A semicolon-delimited list of file extensions, including dots, that users are prohibited from uploading to file fields, excluding Custom Pages. For example, .exe;.html See also ApplicationRestrictedFileTypes .
Recommended security value	<p>Note: This instance setting must be manually added to your environment.</p> <ul style="list-style-type: none"> ○ Use the default values plus any other file extensions your organization deems necessary.

- Certain types of files could contain malicious scripts.

■ RestrictedNativeFileTypes

Section	Relativity.Core
Value	HTML;HTM;EXE
Description	A semicolon-delimited list of file types users are prohibited from uploading to file fields, excluding Custom Pages. These values are regular expression enabled, so custom validation behavior is also supported.
	Note: This instance setting must be manually added to your environment.
Recommended security value	<ul style="list-style-type: none"> ◦ Use the default values plus any other file extensions your organization deems necessary. ◦ Certain types of files could contain malicious scripts.

■ RestrictReferentialFileLinksOnImport

Section	Relativity.Core
Value	True
Description	Controls whether non-system administrators can import documents, objects, images, and productions using referential links for files already in a valid, Relativity-accessible location. When set to True, non-system administrators can import only by uploading files. When set to False, all users can import using referential links.
Recommended security value	True - this ensures users cannot import files from workspaces they have no access to.

■ RestServicesUri

Section	Relativity.Core
Value	//localhost/Relativity.Rest/
Description	Identifies a path to the REST Services URI.

■ RestUriForCAAT

Section	Relativity.Core
Value	http://mainline-1.testing.kcura.corp/Relativity.Rest/API
Description	Specifies the URL at which CAAT can access the Services API Kepler services using API helpers. This setting is not machine specific and applies to all servers in the environment. You must enter a valid FQDN of a web or agent server hosting Kepler services. For example, https://client.domain.name/Relativity.REST/API.

■ RetainConvertedDocumentsHours

Section	Relativity.Conversion.Cache
Value	72
Description	If the last accessed time is more than the hour limit you select, cache files are deleted.

■ RetainJobRecordsDays

Section	Relativity.Conversion.Cache
Value	30
Description	The number of days to retain eddsdbo.ClearCacheLocationStatistics records for completed jobs before they're automatically deleted.

- Retries

Section	kCura.AssistedReview
Value	3
Description	Determines the number of times RAR agents retry upon failure of a given operation. After retries are exhausted, the project has an error status; retries occur every 30 seconds by default.

- Retries

Section	Relativity.StructuredAnalytics
Value	3
Description	Number of times agents retry upon failure of a given Structured Analytics operation. After retries are exhausted, the project has an error status; retries occur every 30 seconds by default.

- RetryWaitTime

Section	kCura.AssistedReview
Value	30
Description	The amount of time, in seconds, between Relativity's attempt to retry errors.

- RevertMaxAuditCount

Section	kCura.Audit
Value	5000
Description	Maximum number of audits that can be present on the item list view for the Revert mass operation. Do not increase this value past 5000.

- RevertThresholdToleranceInMilliseconds

Section	kCura.Audit
Value	100
Description	Timestamp difference allowed between SQL last modified and Data Grid audits timestamps, in milliseconds, when determining whether an audit can be reverted.

- ReviewQueueBatchSize

Section	Analytics.ActiveLearning
Value	150
Description	Defines the number of documents that are requested for review from the analytics engine when the number of outstanding documents in a review queue falls under the level defined by the ReviewQueueRefreshThreshold instance setting. The actual number of documents requested is the number of active reviewers on the review multiplied by the ReviewQueueBatchSize value.

- ReviewQueueRefreshThreshold

Section	Analytics.ActiveLearning
Value	50
Description	The number of documents in a review queue under which Active Learning will request more documents for review from the Analytics Engine. The actual threshold is the number of active reviewers on the review multiplied by the ReviewQueueRefreshThreshold value.

- RichTextEditorFontDefault

Section	kCura.EDDS.Web
Value	Arial
Description	Specifies the default font to be loaded in the rich text editor on page load. Relativity requires one of the following values exactly and defaults to Arial if left blank or otherwise specified: Arial, Arial Black, Comic Sans MS, Courier New, Helvetica, Impact, Tahoma, Trebuchet MS, Times New Roman, Verdana.

- RichTextEditorSpellCheckDefaultState

Section	kCura.EDDS.Web
Value	True
Description	Controls if the spell check button is selected by default when loading the rich text editor. If set to True, the spell check button is selected by default. If set to False, the spell check button is not selected by default.

- RolledSecretExpiration

Section	Relativity.Authentication
Value	00:15:00
Description	Do not modify. The time interval a rolled secret remains valid before it expiring. Default value is 15 minutes, 00:15:00. For formatting rules, see https://msdn.microsoft.com/en-us/library/3z48198e(v=vs.110).aspx .

- RPCSessionTimeout

Section	Relativity.Authentication
Value	00:15:00
Description	The time interval a Relativity Processing Console user session remains valid before it is logged out. Default value is 15 minutes, 00:15:00.

- RPCSessionTimeoutDelay

Section	Relativity.Authentication
Value	00:00:90
Description	The time interval a Relativity Processing Console user session is prompted for inactivity before it is logged out. Default value is 90 seconds, 00:00:90.

- RSAConfigFilePath

Section	Relativity.Authentication
Value	%RelativityWebInstallDir%\RSA
Description	Identifies the location of the sdconf.rec file and optional sdopts.rec file. These files ini-

tialize the RSA library when RSA authentication is set up. The value must include the drive letter, for example `C:\Program Files\kCura Corporation\Relativity\EDDS\RSA`. You cannot use environment variables as part of the path.

- RUMEnable

Section kCura.EDDS.Web

Value True

Description Controls whether Relativity User Metrics collects click data. Setting this value to True lets Relativity User Metrics collect click data. Setting this value to False does not allow Relativity User Metrics to collect click data.

- RUMEndpoint

Section kCura.EDDS.Web

Value `https://rum-cloud.relativity.com:443/`

Description Identifies the URL for data submission for Relativity User Metrics.

- RUMIdentifier

Section kCura.EDDS.Web

Value A000C182-52A6-417D-A279-BC24F365B20D

Description Identifies the GUID that Relativity uses to identify an instance for Relativity User Metrics

2.21 S

- SamplingStatisticalPopulationResultsLimit

Section kCura.EDDS.Web

Value 300

Description Determines the minimum number of items in a data set required for statistical sampling to be valid. Fewer items than the default value constitutes an insufficient population for reliable statistical sampling and throws an error if the user attempts to sample.

- SaveAsPDFExpiration

Section Relativity.Core

Value 7

Description The maximum length, in days, that a Mass Save as PDF document stays in the cache. The value is ignored if the file is downloaded in the pop-up window. The value is respected if the file is downloaded from an email.

- SaveAsPDFJobPriorityDefault

Section Relativity.Core

Value 100

Description Determines the default priority for all Save as PDF jobs.

- SaveAsPDFStampLengthLimit

Section	Relativity.Core
Value	100
Description	Determines the maximum number of characters allowed in a Save as PDF stamp identifier. Only the first 100 characters are stamped on the document if the value of the field or text used is longer than this value.

- ScriptRunManagerMaxConcurrentThreads

Section	kCura.EDDS.Agents
Value	10
Description	Determines the max amount of concurrent script run threads each agent can use, defaults to 10.

- SecretRollFrequency

Section	Relativity.Authentication
Value	30 9 * * 2
Description	Do not modify. The frequency at which the Secret Agent rolls secrets. The value is in Crontab format. The Secret Agent must be run more frequently than specified by the value of this instance setting. This setting is parsed and executed based on the server time that the agent is running on.

- SearchAgentServicePort

Section	Relativity.Core
Value	6870
Description	Identifies the default port that the dtSearchAgent uses to service search requests.

- SearchCacheTableCreationTimeout

Section	Relativity.Core
Value	60
Description	The timeout value, in seconds, for the creation of a Search Cache table. Note: This instance setting must be manually added to your environment.

- SearchIndexerLongRunningQueryTimeout

Section	Relativity.Data
Value	1200
Description	The timeout value, in seconds, associated with long running queries run by dtSearch, Analytics, and Domain Parsing.

- SearchIndexerMaxPopulationErrors

Section	SearchIndexerMaxPopulationErrors
Value	5000
Description	Determines the maximum number of errors allowed for a single population process in dtSearch or Analytics before the job is terminated. If this limit is reached, the respective agent throws an exception saying that the failure limit has been reached.

- SearchIndexerTextFromSQLChunkSizeInBytes

Section	Relativity.Data
Value	1048576
Description	Determines the size of the text chunks streamed from SQL to either the dtSearch or Analytics agents when they are writing large files to disk. Increasing this value may improve performance when populating large files. The larger this value becomes, the greater the chance that either the dtSearch or Content Analyst agent will run out of memory.

- SeedingAgentBatchSize

Section	Relativity.DataGrid.Migration
Value	500
Description	Default size of batches for seeding.

- SendNotificationOnImportCompletion

Section	Relativity.Core
Value	False
Description	Determines whether Relativity sends a notification email to the user running the import when the import completes.

- SendNotificationOnImportCompletionByDefault

Section	kCura.EDDS.WinForms
Value	False
Description	Determines whether Relativity sends a notification to the user uploading data on import completion. If set to True, Relativity sends a notification to the user uploading data on import completion. If set to False, Relativity does not send a notification.

- SequenceReservationSize

Section	Relativity.ApplicationBase
Value	100
Description	Determines the number of IDs that Relativity should reserve to memory at a time.

- ServerCheckInInterval

Section	Relativity.Core
Value	60000 msec
Description	The time interval, in milliseconds, used to indicate how frequently a server must check in with Relativity.

- ServerManagerRetries

Section	kCura.EDDS.Agents
Value	3
Description	Determines the number of attempts the Server Manager agent makes to connect to a server before it sets the server status to inactive.

- ServiceBusFullyQualifiedDomainName

Section	Relativity.ServiceBus
---------	-----------------------

Value	localhost
Description	When using RabbitMQ, ServiceBusFullyQualifiedDomainName specifies the fully-qualified domain name for the machine or load balancer where Relativity can reach the environment's cluster. The Relativity installer automatically sets this value during an installation or upgrade based on the inputs in the RelativityResponse.txt file.
	Note: The semi-colon delimited list is not supported for RabbitMQ.
	For more information, see the Relativity Installation Guide.

- ServiceHostExclusionList

Section	Relativity.Platform.Discovery
Value	Text
Description	A semi-colon delimited list of GUIDs for services that you want prevented from starting in the Service Host Manager.

- ServicesAPIHostingOnAgentServersMode

Section	kCura.Relativity
Value	SelfHosting
Description	Determines how agents access the Services API in a Relativity environment. Values include SelfHosting and PredefinedURL .

- ServicesAPIHostingOnAgentServersPredefinedURL

Section	kCura.Relativity
Value	http://localhost:9997/Relativity.Services/
Description	Identifies the URL that agents use to access the Services API server when ServicesAPIHostingOnAgentServersMode setting is set to PredefinedURL .

- ServicesAPIMetadataPortOnAgentServers

Section	kCura.Relativity
Value	6867
Description	Identifies the TCP port that the self-hosted Services API metadata endpoints use on agent servers.

- SessionTimeoutDelay

Section	kCura.EDDS.Web
Value	90000
Description	The amount of time, in milliseconds, before a user's session expires that Relativity issues a warning.

- SFUMaxFilesToUpload

Section	SFU
Value	100
Description	Determines the maximum number of files you can upload at one time using Simple File Upload. The maximum value you can set is 100.

- ShowAllEmailAddresses

Section	Relativity.DocumentViewer
Value	True
Description	Controls the default visibility of email address information in the Viewer. If set to True, Email Addresses will be expanded by default. Users can expand and collapse additional email address information by interacting with the expand and collapse toggle with the Viewer.

- ShowDeobfuscateTool

Section	kCura.EDDS.Web
Value	False
Description	Controls whether the deobfuscate tool appears. If set to True, the deobfuscate tool appears. By default this value is set to False, and the deobfuscate tool does not appear.

ShowStackTraceOnADSInstalls

Section	kCura.EDDS.Web
Value	False
Description	Determines if ADS results will show the full stack trace to system administrators.

- ShowStackTraceOnError

Section	kCura.EDDS.Web
Value	True
Description	Controls whether full stack traces appear to users when an error occurs. If set to True, full stack traces appear to users when an error occurs. If set to False, full stack traces do not appear to users when an error occurs.
Recommended security value	<ul style="list-style-type: none"> ◦ Set the value to False unless you want all users with access to the Errors tab to see full stack traces for errors. Set to True for active troubleshooting situations. ◦ It is more secure to hide the details of error messages, so users cannot see more information than is necessary. Without hiding this information, software and server details could be revealed.

- SkipDocumentAuditDuringPublish

Section	Relativity.Core
Value	False
Description	Determines whether Created and Native Created events are recorded in Document History during the publish phase of Processing. Setting the value to False will increase your publish time.

- SMTPPassword

Section	kCura.Notification
Value	blank
Description	Defines the password for the username associated with the credentials of the SMTP server. This password validates against the SMTP authentication.

Note: This instance setting must be manually added to your environment.

- SMTPPort

Section kCura.Notification

Value 25

Identifies the port used for SMTP transactions. You can change the default to another port based on the setup of the SMTP server in your environment. It must be an integer value.

Description

Note: This instance setting must be manually added to your environment.

- SMTPServer

Section kCura.Notification

Value blank

Identifies the SMTP server used to send notifications. Update the default value with a setting appropriate for your environment.

Description

Note: This instance setting must be manually added to your environment.

- SMTPSSLisRequired

Section kCura.Notification

Value False

Description If set to True, this instance setting forces all SMTP communication over SSL.

Recommended security value True - this will ensure SMTP server sends encrypted emails.

- SMTPUserName

Section kCura.Notification

Value blank

Defines the username associated with the credentials of the SMTP server. It's validated against the SMTP authentication. The SMTPUserName must be associated with the

Description same account as defined in EmailFrom.

Note: This instance setting must be manually added to your environment.

- SQLCommandTimeout

Section kCura.ARM

Value 300

Description This setting controls the default SQLCommand timeout, in seconds, within ARM when executing select queries.

- SQLTimeout

Section	kCura.EDDS.Procuro
Value	7200
Description	The SQL Timeout value, in seconds, used when executing Procuro scripts..

- SslCertificateThumbprint

Section	kCura.Service.ServiceHost
Value	N/A
Description	If the Service Host Manager is configured to use HTTPS, you can use this instance setting to override the default automatic certificate selection behavior. The value is the thumbprint of the certificate for SSL bindings. For more information, see Service Host Manager on the Relativity Documentation site.
	Note: This instance setting must be manually added to your environment.

- StopProcessingWhenNotInOffHours

Section	Relativity.Conversion.Cache
Value	True
Description	Determines whether to stop processing when no longer within the off-hours time period.

- SSLOffloaded

Section	kCura.EDDS.Web
Value	False
Description	Controls whether the native document viewer requests downloads with the protocol that the web browser uses to communicate with Relativity. This functionality is designed for use in environments that include an SSL Offloading server. If set to True, the native document viewer requests downloads with the protocol that the web browser uses to communicate with Relativity. If set to False, the native document viewer does not request downloads with the protocol that the web browser uses to communicate with Relativity.

- StatisticsOutputFileSizeLimit

Section	Relativity.Core
Value	512
Description	The maximum size, in kilobytes, for a file aggregated by a statistics event handler. This file size is per event handler in a given workspace. For example, the case statistics manager collects data added to this type of file.

- StratifiedSamplingAlgorithm

Section	kCura.AssistedReview
Value	FastSample
Description	Determines which cluster algorithm to use with Stratified sampling. Allowed values are FastSample and SmartSample. FastSample, is a replacement algorithm for SmartSample that is much faster. Its parameters, operation and output is the same as SmartSample, except that it randomly picks each primary document. This randomness makes the results of FastSample non-deterministic, so its results will change from run to run, but it still produces excellent results.

- StratifiedSamplingCoverage

Section	kCura.AssistedReview
Value	.8
Description	Determines the percentage of categorization coverage the sample set will provide. This is a decimal value.

- STRParallelizationFactor

Section	Relativity.Core
Value	10
Description	STR Parallel thread factor to be used for STRs using Lucene search.

- StuckBrandingManagerTimeout

Section	Relativity.Production
Value	900
Description	The amount of time, in seconds, that must elapse from the last message sent by a branding manager until it times out. Set to 0 to disable.

- SupportedVersions

Section	kCura.EDDS.TemplateManager
Value	X.X
Description	Specifies the Relativity versions that the template manager supports.

- SupportXForwardedFor

Section	Relativity.Core
Value	False
Description	Supports the X-Forwarded-For HTTP header field when checking for trusted client IP addresses on Relativity user accounts. If set to True, X-Forwarded-For is supported. If set to False, X-Forwarded-For is not supported.

- SyncExcludes

Section	Relativity.Core
Value	kCura.Sync.dll; kCura.Sync.Utility.dll; NullableTypes.dll; itextsharp.dll
Description	A semicolon-delimited list of system DLLs that exist in the sync directory that should not be recognized as syncs.

- SystemArtifactCacheExpiration

Section	Relativity.Core
Value	240
Description	The amount of time, in minutes, before the system artifact cache for any given workspace expires and refreshes the next time it's accessed. If you're restoring archived databases into newly created workspaces, we recommend that you reduce this value to 15 or 30 minutes.

2.22 T

- TallyBatchAmount

Section	kCura.EDDS.Web
Value	1000
Description	Determines the number of documents per batch for the tally process.

- TapiForceBcpHttpClient

Section	Relativity.DataTransfer
Value	"" (blank)
Description	When this value is set to true, the HTTP transfer client is forced only for BCP operations. When it's false, the best fit transfer client is chosen at runtime. This functionality is also available as the TapiForceBcpHttpClient configuration setting for the RDC. For more information, see Desktop Client Guide.

- TelemetryKeplerUri

Section	Relativity.Telemetry
Value	http://localhost:8195/relativity.rest/api
Description	Identifies the location of the host for the Kepler services. The default value is generally the correct URI for agent-hosted Kepler services. However, you must configure this value for most applications so that it points to a Relativity web server or appropriate host. This instance setting is available only when you install telemetry in your environment.

- TargetTransferRateMbps

Section	kCura.Fta
Value	100
Description	The default target transfer rate, in Mbps, for the file transfer job configuration.

- TenancyFeatureAvailable

Section	Relativity.Core
Value	False
Description	This instance setting was deprecated in Relativity 9.5.162.111. Determines the visibility of the values that allow a client to become a tenant. If set to True, features related to multi-tenancy are visible and available inside the environment. If set to False, users do not see anything related to multi-tenancy.

- TextExtractionTemporaryDirectory

Section	Relativity.Core
Value	blank
Description	Identifies the temporary directory that the Text Extraction Manager uses. If left blank, the Text Extraction Manager uses the default document directory for the case.

- TextViewerMaxPageSize

Section	Relativity.DocumentViewer
Value	512000
Description	The maximum size, in bytes, of text streamed to the text viewer at once.

- TextViewerPageBufferSize

Section	Relativity.DocumentViewer
Value	102400
Description	The buffer size, in bytes, for text allowed to stream to the text viewer.

- ThresholdForIdClauseInMemoryForDeleteExtensions

Section	Relativity.DocumentViewer
Value	100
Description	Determines whether the query engine in Relativity uses a .csv file or a subquery in the IN clause of a report row when deleting reports and extensions.

- TitleText

Section	kCura.EDDS.Web
Value	Relativity
Description	Defines the text of the header title within Relativity.

- TransmissionMetricCount

Section	Relativity.Telemetry
Value	15000
Description	Determines the size of the batch used for sending metric data to the transmission agent. A batch is a group of metrics, and the number of metrics in a group is determined by the batch size. This instance setting is available only when you install telemetry in your environment.

- TransmissionUpdateMetricCount

Section	Relativity.Telemetry
Value	5000
Description	Determines the size of the batch used for transmitting data back to Relativity ODA LLC. A batch is a group of metrics, and the number of metrics in a group is determined by the batch size. This instance setting is available only when you install telemetry in your environment.

- TreatHtmlAndXmlAsText

Section	kCura.EDDS.Web.Distributed
Value	True
Description	Controls the content-type header returned by files with HTM or HTML extensions from Relativity.Distributed. If set to True, the content-type is text/plain. If set to False, the content-type is set to text/html. The default value is True. The net effect of setting this to True is that the Native Viewer displays the raw markup of HTML files instead of rendering the content.

Recommended security value	True - this helps prevent malicious code from executing when a Native document is viewed in the Viewer because it's not automatically rendered. The content of the content-type header for the native files is unknown and, therefore, untrusted.
----------------------------	---

- TreeViewNodeWaitTimeMilliseconds

Section	kCura.Fta
Value	500
Description	The default wait time, in milliseconds, for the tree view node when users expand the node. When the wait time is over, a spinner displays in that node to notify users that data is loading.

- TrustedIPsForTokenLogin

Section	kCura.EDDS.Web
Value	empty
Description	A comma-delimited list of trusted IP addresses for logging in to Relativity with an authentication token. Enter <i>any</i> to trust all IPs. This instance setting is deprecated and will be removed in a future version.

2.23 U

- UIQueryTimeout

Section	Relativity.Production
Value	120
Description	The amount of time, in seconds, for a production view query to execute until it times out.

- UnpackAgentUpdateRateMilliseconds

Section	kCura.Fta
Value	250
Description	The default rate, in milliseconds, for the transfer agent to update the client job RDO during the auto-unpack process.

- UnpackFrontEndUpdateRateMilliseconds

Section	kCura.Fta
Value	1000
Description	The default rate, in milliseconds, to retrieve the auto-unpack progress from the RDO and update the front-end.

- UpdateIncludeInTextIndexOnRapImport

Section	Relativity.Core
Value	False
Description	Determines whether application fields with the Include In Text Index property set to True are included in the text index after import. The default value is False. If set to True, the fields are included in the text index which requires the index to be rebuilt and can impact performance.

- UseAgentBasedConversion

Section	Relativity.Core
Value	False
Description	Change the value to true to use conversion agents on cloud instance.

- UseExtractedTextPathOnlyforPublish

Section	Relativity.Core
Value	True
Description	Controls whether during publish, extracted text is included as a path, value set to True, or as plain text, value set to False.

- UsePermissionsCachingMode

Section	Relativity.Data
Value	Standard
Description	Indicates the mechanism used to check Relativity user permissions. This instance setting can be set to the following:
	<ul style="list-style-type: none"> ○ Cache—use a permissions caching mechanism to improve performance by minimizing calls to the SQL database. ○ Standard (Default)—request the full permission matrix and then filter for required permissions. The most reliable, but may slow performance. ○ Lazy—only pull permission rows with given artifactTypeId. No caching, but better performance than Standard.

- UsePermissionsCachingSeconds

Section	Relativity.Data
Value	30 seconds
Description	Indicates the number of seconds between the previous and next cache refresh. If a change occurred during this interval, the refresh updates the access rights that a user has to a Relativity object.

- UseTimeBasedConvertedCacheManagement

Section	Relativity.Core
Value	False
Description	Controls the toggle between cache size-based and last access-based cache management.
	If set to True, your instance will use time-based cache management, which will reference the HoursToRetainConvertedDocuments instance setting value to determine how long to retain cache files. If set to false, your instance will use cache size-based cache management which will reference the CacheLocationUpperThreshold and CacheLocationLowerThreshold instance setting values to determine rules for retaining cache files.

- UserCanChangeDocumentViewerDefault

Section	kCura.EDSS.Web
---------	----------------

Value	False
Description	Controls the default value on user creation for the User Can Change Document Viewer option. If set to True, the user can change the document viewer. If set to False, the user cannot change the document viewer.

- UserCanChangePasswordDefault

Section	Relativity.Authentication
Value	True
Description	Sets default value for the UserCanChangePassword setting in the Authentication Provider Settings section of the Authentication Provider tab. The default value for the UserCanChangePassword. True lets the user change their own password.

- UserCanChangeSettingsDefault

Section	kCura.EDDS.Web
Value	True
Description	Controls the default value on user creation for the User Can Change Settings option. If set to True, the user can change settings. If set to False, the user cannot change settings.

- UsersMustAgreeToTermsOfUse

Section	kCura.EDDS.Web
Value	False
Description	Controls whether Relativity displays the terms of use agreement and requires the user to accept it. If set to True, the users must accept the terms of use when they log in to Relativity for the first time. If set to False, Relativity does not display the terms of use when users log in.

- UserStatusCacheExpiration

Section	Relativity.Core
Value	30
Description	The amount of time, in seconds, that the UserStatus cache is used from memory before refreshing with data from the UserStatus table.

- UseWindowsAuthentication

Section	Relativity.Authentication
Value	False
Description	Determines whether Relativity uses Windows Authentication. Setting this value to False disables Windows Authentication. Setting this value to True enables Windows Authentication and requires the user to log in to Relativity from the current machine. You can then use the Authentication Data field on the User layout to map user credentials to a Windows account. Users can then enter their Windows passwords when logging in to Relativity.

2.24 V

■ ValidateAssemblyVersion

Section	kCura.EDDS.WebAPI
Value	x.x.*.* <p>As of the Relativity 10.3 , this instance setting is no longer used to determine the compatibility of the RDC or Import API with a specific version of Relativity.</p> <p>Determines which parts of the Relativity version number are validated between the desktop client and the Relativity WebAPI version. For example, given the WebAPI version is 4.20.1.1 and the desktop client is 4.20.1.2:</p>
Description	<ul style="list-style-type: none">○ *.*.* match○ x.x.*.* match○ x.x.x.x do not match (the last node between the two is different)○ x.x.x.* match○ *.*.*.x do not match

■ ViewableDocumentsIncrementCount

Section	Relativity.Core
Value	5000 <p>Determines the number of items that can be added to the viewable set on various list pages. It is the value in the Add next xxx drop-down menu on the bottom of various list pages.</p>
Description	

■ ViewerShowsHelpfulTroubleshootingErrorMessage

Section	Relativity.DocumentViewer
Value	True <p>If set to True, the Viewer will display full-length and descriptive, custom error messages for each error that you experience. If set to False, the Viewer will display the following error message for every error you experience:</p>
Description	<p>An Error Has Occurred</p> <p>An error has occurred while trying to view this document.</p>

■ ViewQueryOptimization

Section	Relativity.Core
Value	5 <p>Do not modify without advice from Relativity Customer Support. This defines the number of entries cached for use with holding page view states. Requires an IISReset after you change the value.</p>
Description	

■ ViewStateNumPages

Section	kCura.EDDS.Web
---------	----------------

Value	3000
Description	Determines the number of times the view state is saved before it is recycled. If the value is less than 1, it will default to 5.

- ViewerVisibilityWithoutContentForPreview

Section	Relativity.DocumentViewer
Value	Full
Description	<p>This instance setting determines the user preference for Viewer visibility when using the Document Preview panel. The default value for this instance setting is Full with the option to set it to Limited, if desired.</p> <p>If set to Limited, the user only sees the Viewers for which the document has content and, when navigating across documents, the active Viewer is automatically switched to a Viewer for which the document has content.</p> <p>If set to Full, the user sees all of the Viewers regardless of whether there is content for them or not. When the user is navigating across documents, the active Viewer is never automatically switched.</p>

2.25 W

- WebAPIPath

Section	kCura.EDDS.DBMT
Value	http://localhost/RelativityWebAPI/
Description	<p>Identifies the Web API path for the DBMT.</p> <hr/> <p>Note: The DBMT has been deprecated as of Relativity 9.5.219.30. You can now use the ARM application to archive, restore, and move Relativity workspaces. In addition, you can use this application to convert a DBMT archive into an ARM archive. For more information, see the ARM page on the Documentation site.</p> <hr/>

- WebAPIPath

Section	kCura.EDDS.Web
Value	During Relativity installation
Description	<p>Identifies the WebAPI path for Relativity.</p> <p>If you enter a full URL for this value, the protocol must match what is used in the browser. If Relativity is set up to use either HTTP or HTTPS, but not both, you can enter a full URL. Do not specify the protocol in this value if Relativity is set up to use both HTTP and HTTPS.</p>

- WebClientBatchSize

Section	Relativity.Core
Value	1000
Description	Determines the number of pages within the document per batch for mass creating and mass deleting redactions within the web client.

- WebClientKeepAliveInterval

Section	kCura.EDDS.Web
Value	5
Description	The time interval, in minutes, that the Web Client sends ping-type requests to keep sessions open with servers that it uses, such as RelativityWebAPI and Relativity.Distributed.

- WebClientLongTimeout

Section	kCura.EDDS.Web
Value	3000
Description	The amount of time, in milliseconds, that the Web Client components waits for a response when making a potentially long-running WebAPI call before assuming the request has timed out.

- WebClientMaximumRetries

Section	kCura.EDDS.Web
Value	2
Description	Determines the maximum number of times the Web Client attempts to make a WebAPI call before throwing an error.

- WebClientNativeViewerCacheAheadMaxSizeInBytes

Section	kCura.EDDS.Web
Value	52428800
Description	The maximum size, in bytes, of a file the Relativity Web Client Native Viewer Cache Ahead technology caches.

- WebClientPerformanceLatencyTests

Section	kCura.EDDS.Web
Value	5
Description	Determines the number of latency tests that the Relativity Web Client performs when logging performance.

- WebClientPerformanceLoggingInterval

Section	kCura.EDDS.Web
Value	300000
Description	The amount of time, in milliseconds, between performance logging audits from the Relativity Web Client when logging performance.

- WebClientPopupDelay

Section	kCura.EDDS.Web
Value	3000
Description	The amount of time, in milliseconds, before pop-ups appear when performing a long running operation.

- WebClientRedactionWarning

Section	kCura.EDDS.Web
---------	----------------

Value	False
	Controls whether a warning appears if there is a 25x25 redaction on the page.
Description	If set to True, the warning appears if there is a 25x25 redaction on the page. If set to False, the warning does not appear.

■ WebClientRequiredCookies

Section	kCura.EDDS.Web
Value	blank
Description	A semicolon-delimited list of required cookies to pass from the web browser to the web client. Cookies are selected by verifying that the cookie name contains the listed string. Use this instance setting when configuring Network Load Balancing in your Relativity environment for legacy (ActiveX) viewer.

■ WebClientTimeout

Section	kCura.EDDS.Web
Value	3000
Description	The amount of time, in milliseconds, that the web client components wait for a response when making a potentially long running WebAPI call before assuming the request has timed out.

■ WebClientValidateAssemblyVersion

Section	kCura.EDDS.Web
Value	x.x.x.x
Description	Affects how the web client manager determines whether it needs to download and install a new version of the web client. For example, given that Relativity is version 4.20.1.1 and the web client is 4.20.1.2: <ul style="list-style-type: none"> ○ *.*.* will not cause a download/install ○ x.x.*.* will not cause a download/install ○ x.x.x.* will cause a download/install (the last node between the two is different) ○ x.x.x.* will not cause a download/install ○ *.*.*x will cause a download/install

■ WindowsAuthIpRange

Section	Relativity.Authentication
Value	*.*.*
Description	Specifies a list of IP addresses that Relativity uses to validate the IP address of a user during login. The default "*.*.*" permits all IP address. When specifying multiple IP addresses, enter each on a separate line. If you do not enter any value for this instance setting, then the default value (*.*.*) lets users log in from any IP address. When specifying multiple IP addresses, enter each on a separate line.

■ WordIndexMaxWordSize

Section	kCura.EDDS.Agents
---------	-------------------

Value	200
Description	Determines the longest character length of a word when creating a word index. Words larger than this value are truncated.

- WorkerStatusCacheExpiration

Section	Relativity.Core
Value	30
Description	The amount of time, in seconds, that Invariant is cached in the Worker Status Kepler service before refreshing.

- WorkerStatusServiceTimeout

Section	Relativity.Core
Value	5
Description	The amount of time, in seconds, before calls to Invariant from the Worker Status Kepler server time out.

- WorkspaceUpgradeAutoRetryLimit

Section	Relativity.Core
Value	1
Description	The number of times that the Workspace Upgrade Manager agent automatically retries a failed workspace upgrade before it is marked as completed or failed. The maximum effective value is 5, and larger values are reset to 5. A value of 0 disables the auto-retry logic, and requires you to manually retry a failed workspace.

- WorkspaceUpgradeCountForGCFullCollect

Section	Relativity.Core
Value	0
Description	Controls the number of workspaces a group of Application Installer Manager agents on an agent server upgrade before performing a full garbage collection, including compacting the large object heap. For example, if you set this value to 500, and you have two Application Installer Manager agents on an agent server, the garbage collection occurs when both agents have installed applications in a total of 500 workspaces. This setting reduces the amount of memory used during workspace upgrades in large environments. A value of 0 disables the garbage collection and causes memory usage to grow faster during workspace upgrades within large environments. The overall speed of your upgrade may decrease over time. Additionally, the upgrade has the potential to consume all the server's memory.

- WorkspaceUpgradeCountForGCFullCollect

Section	Relativity.Core
Value	0
Description	Controls the number of workspaces a group of Application Installer Manager agents on an agent server upgrade before performing a full garbage collection, including compacting the large object heap. For example, if you set this value to 500, and you have two Application Installer Manager agents on an agent server, the garbage collection

occurs when both agents have installed applications in a total of 500 workspaces. This setting reduces the amount of memory used during workspace upgrades in large environments. A value of 0 disables the garbage collection and causes memory usage to grow faster during workspace upgrades within large environments. The overall speed of your upgrade may decrease over time. Additionally, the upgrade has the potential to consume all the server's memory.

- WrapBrandingTextDefault

Section Relativity.Core

Value false

Description Determines the default value for the Wrap Branding Text field. The field determines whether a Production's branding text will wrap if the content of two adjacent footers or headers are likely to overlap.

2.26 X

- XForwardedForTrustedProxies

Section kCura.EDDS.Web

Value blank

Description Specifies a list of comma-separated IP addresses or ranges, such as wildcards and classless inter-domain routing (CIDR) blocks. These addresses are excluded when the X-Forwarded-For header is checked to determine whether a user's IP is trusted.

Proprietary Rights

This documentation (“**Documentation**”) and the software to which it relates (“**Software**”) belongs to Relativity ODA LLC and/or Relativity’s third party software vendors. Relativity grants written license agreements which contain restrictions. All parties accessing the Documentation or Software must: respect proprietary rights of Relativity and third parties; comply with your organization’s license agreement, including but not limited to license restrictions on use, copying, modifications, reverse engineering, and derivative products; and refrain from any misuse or misappropriation of this Documentation or Software in whole or in part. The Software and Documentation is protected by the **Copyright Act of 1976**, as amended, and the Software code is protected by the **Illinois Trade Secrets Act**. Violations can involve substantial civil liabilities, exemplary damages, and criminal penalties, including fines and possible imprisonment.

©2024. Relativity ODA LLC. All rights reserved. Relativity® is a registered trademark of Relativity ODA LLC.